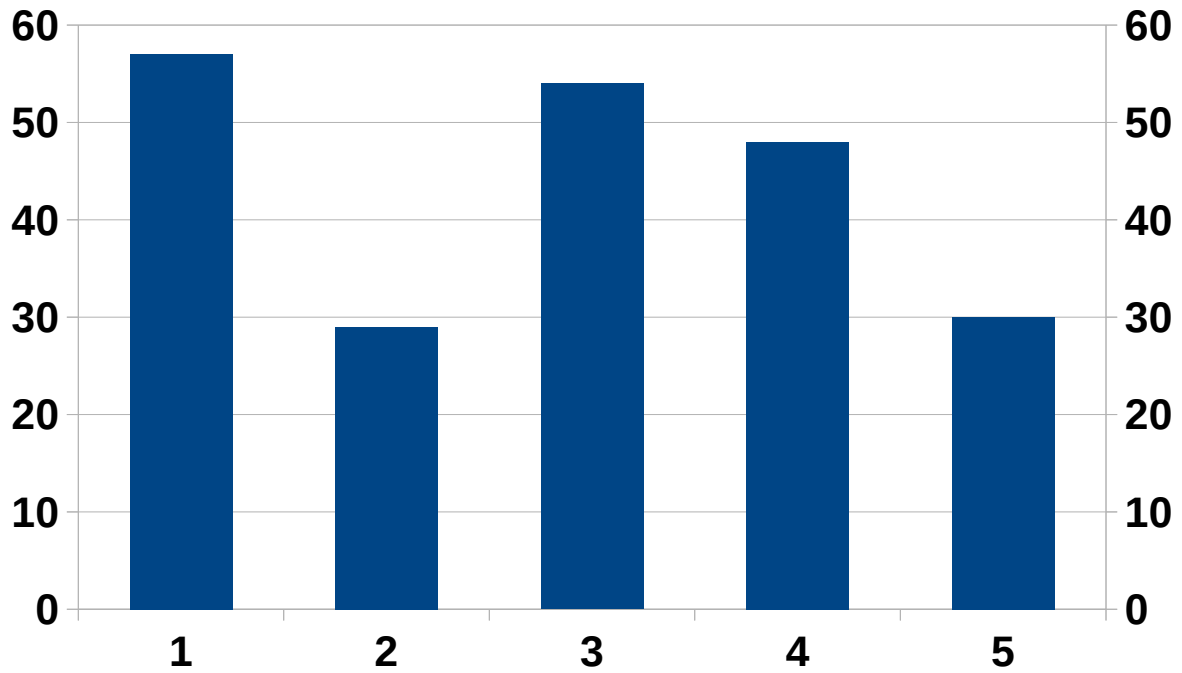
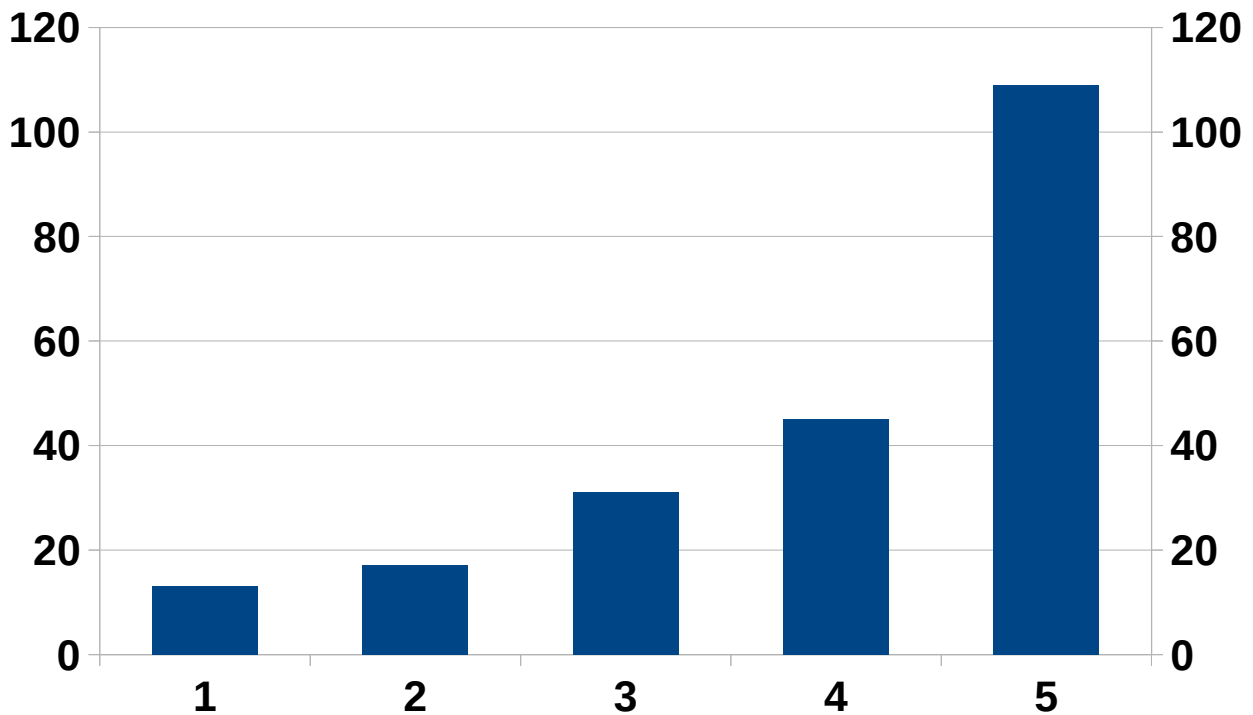


Allgemeine Ausstattung

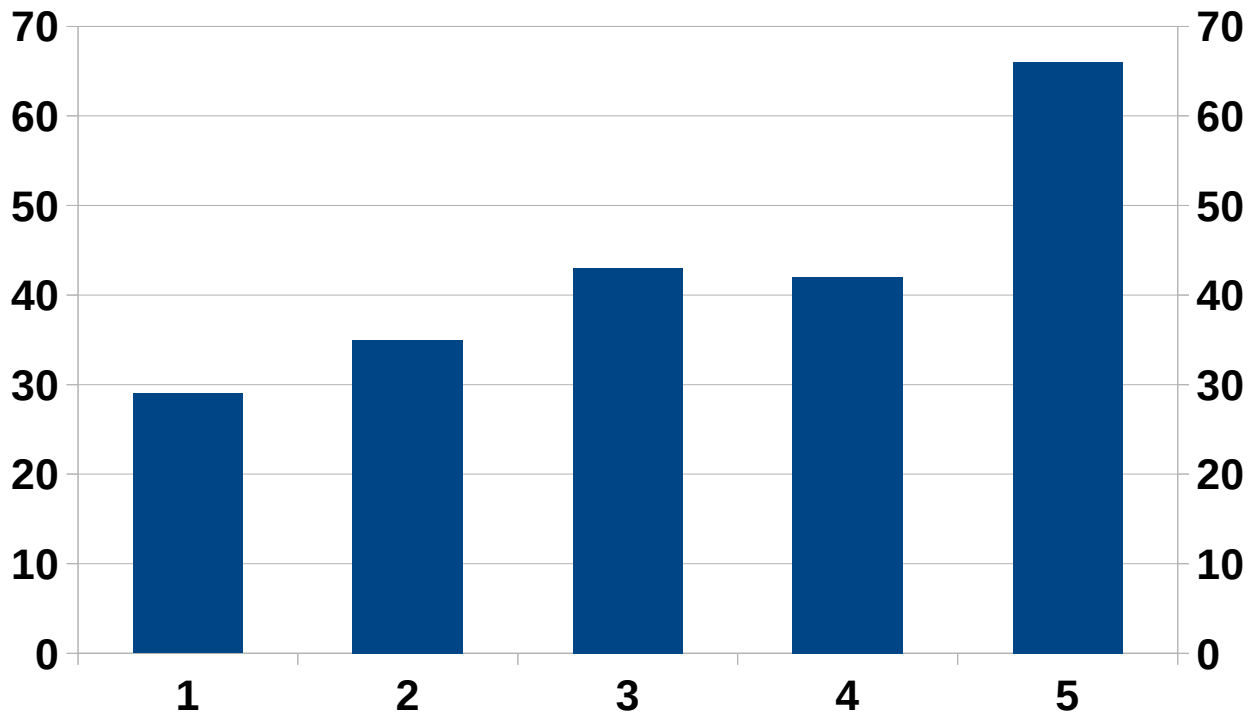
Anschlussmöglichkeit für SDR / Skimmer



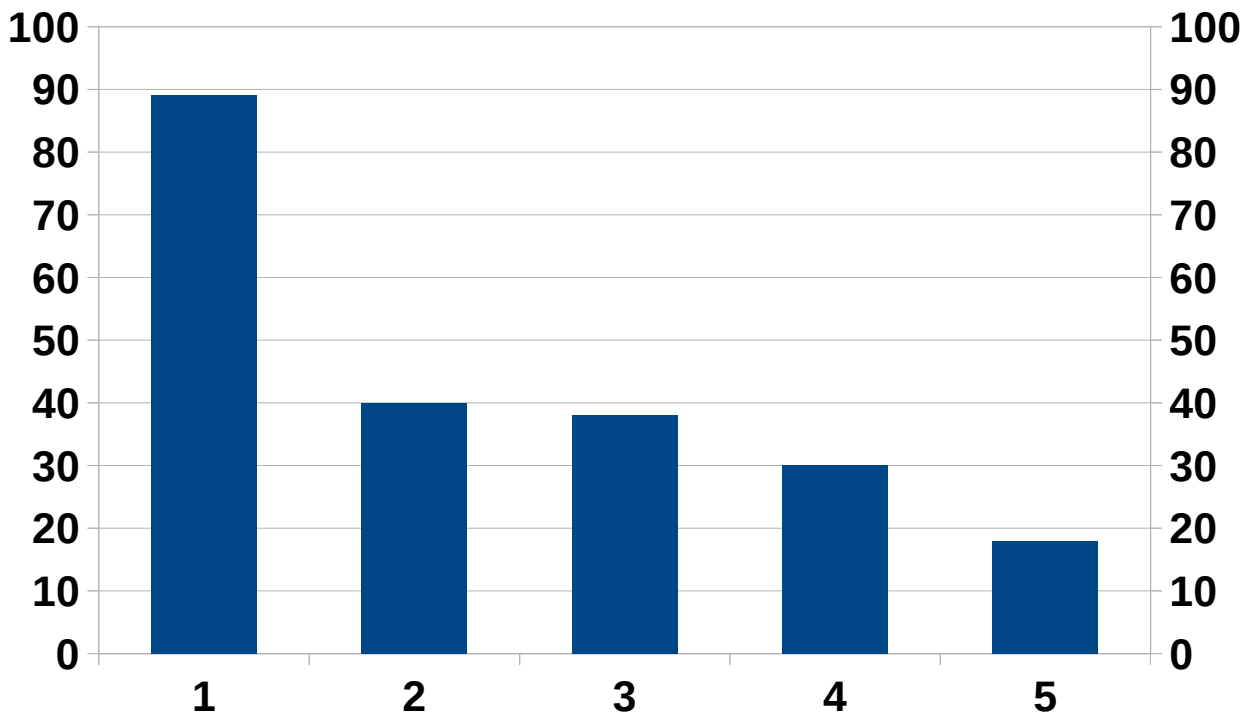
Separater RX-Eingang (für Beverage o.ä.)



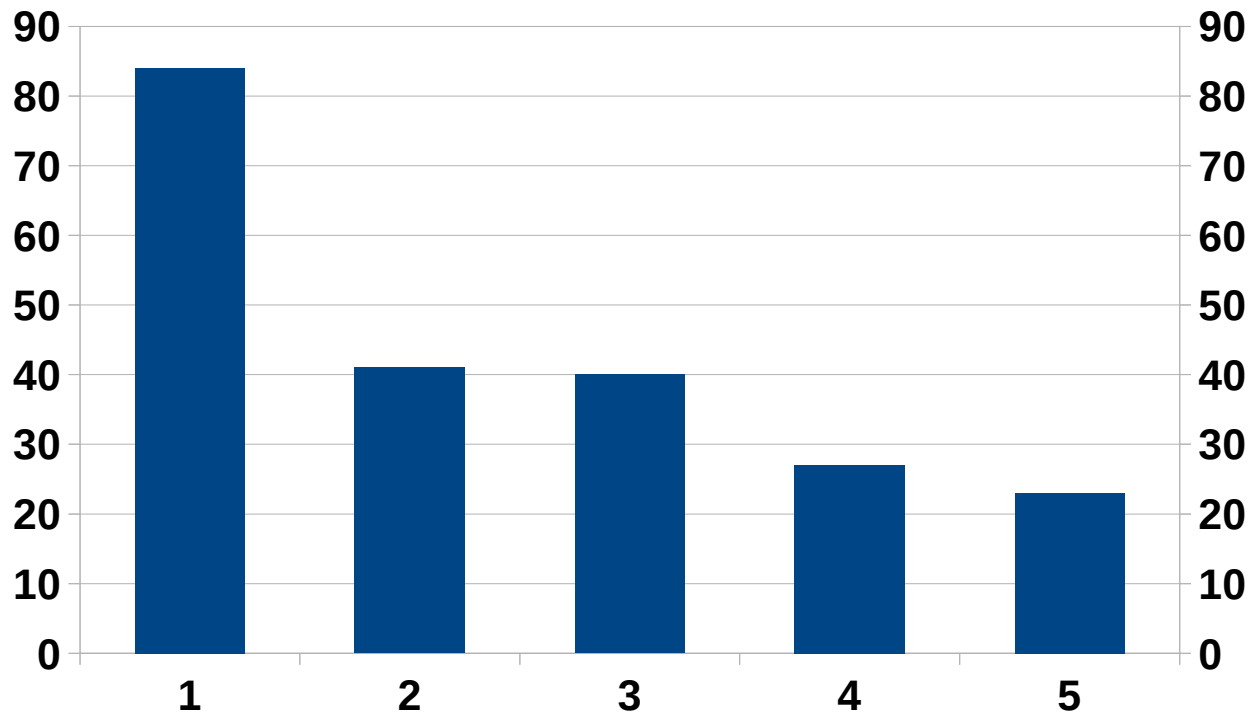
Zweiter RX



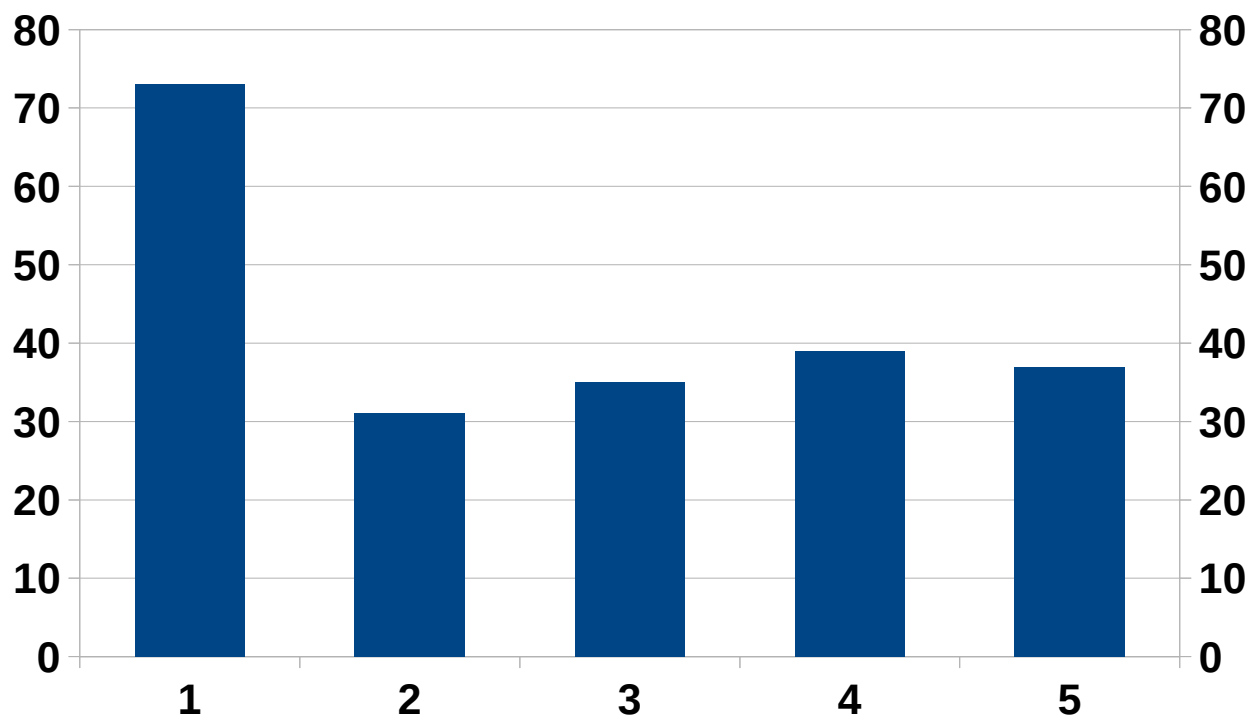
Fieldday-tauglich (kein zweiter RX)



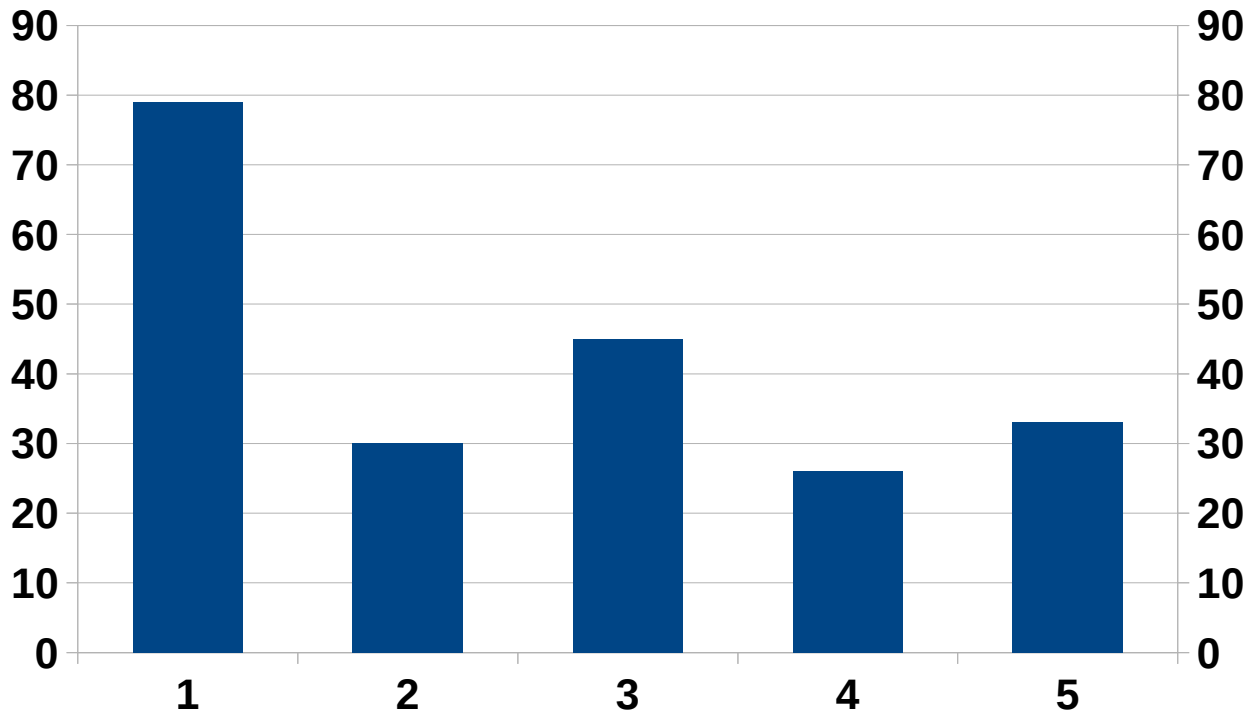
Remote-tauglich (direkt per Netzwerk)



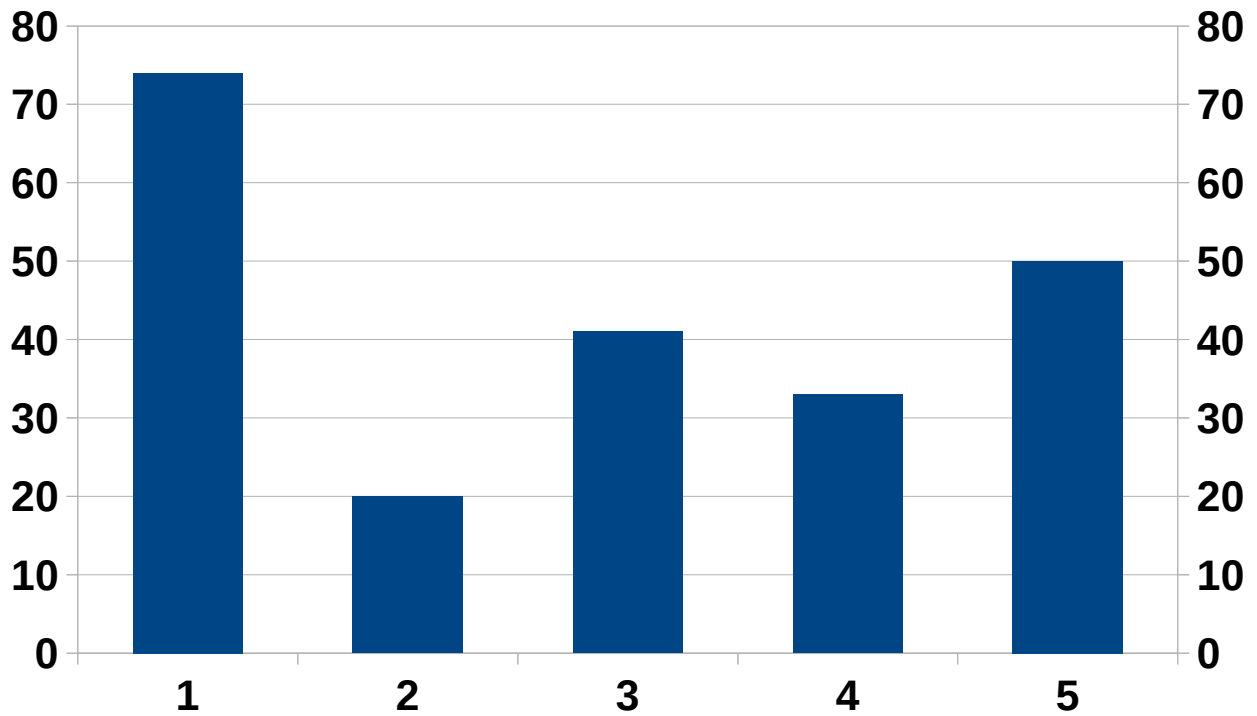
Remote-tauglich (über PC-Software)



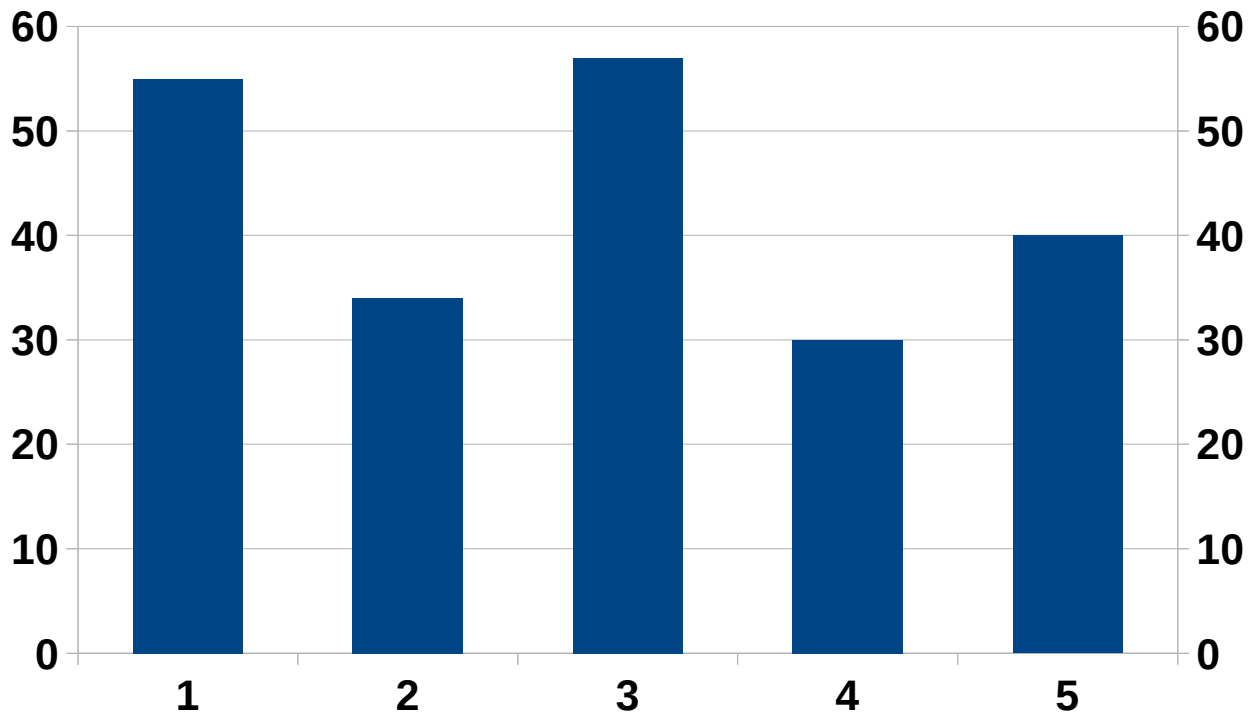
Integrierte USB-Soundkarte



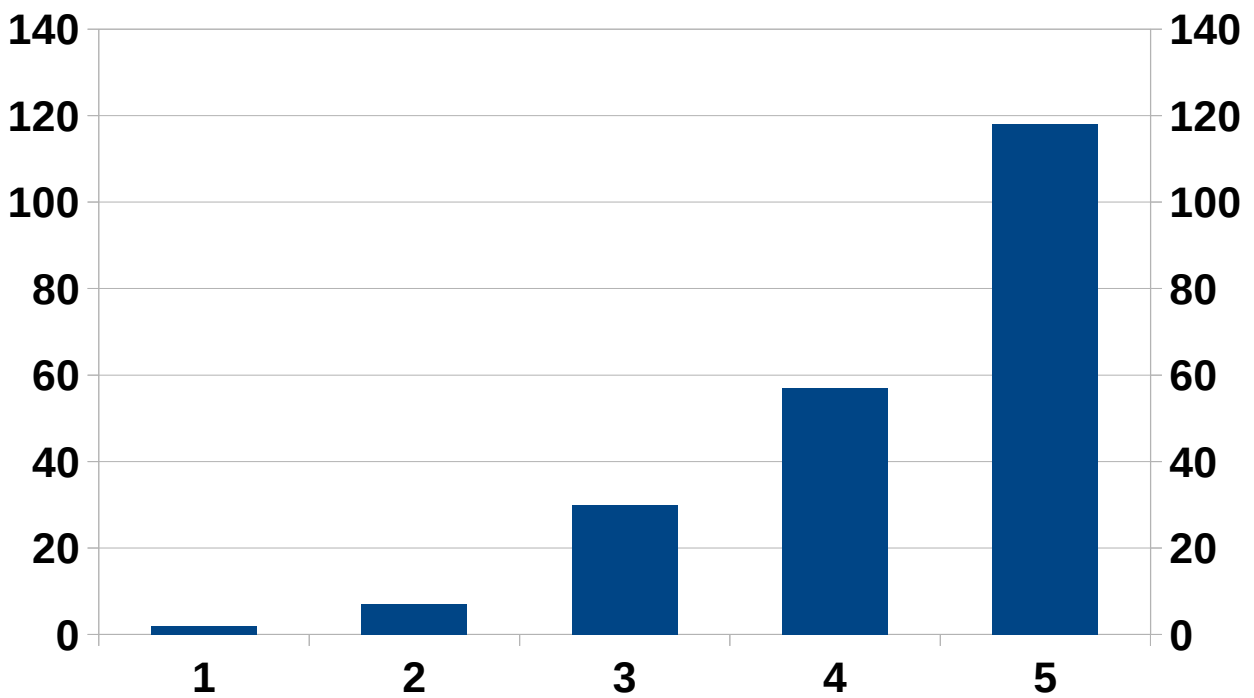
Transverter-Schnittstelle



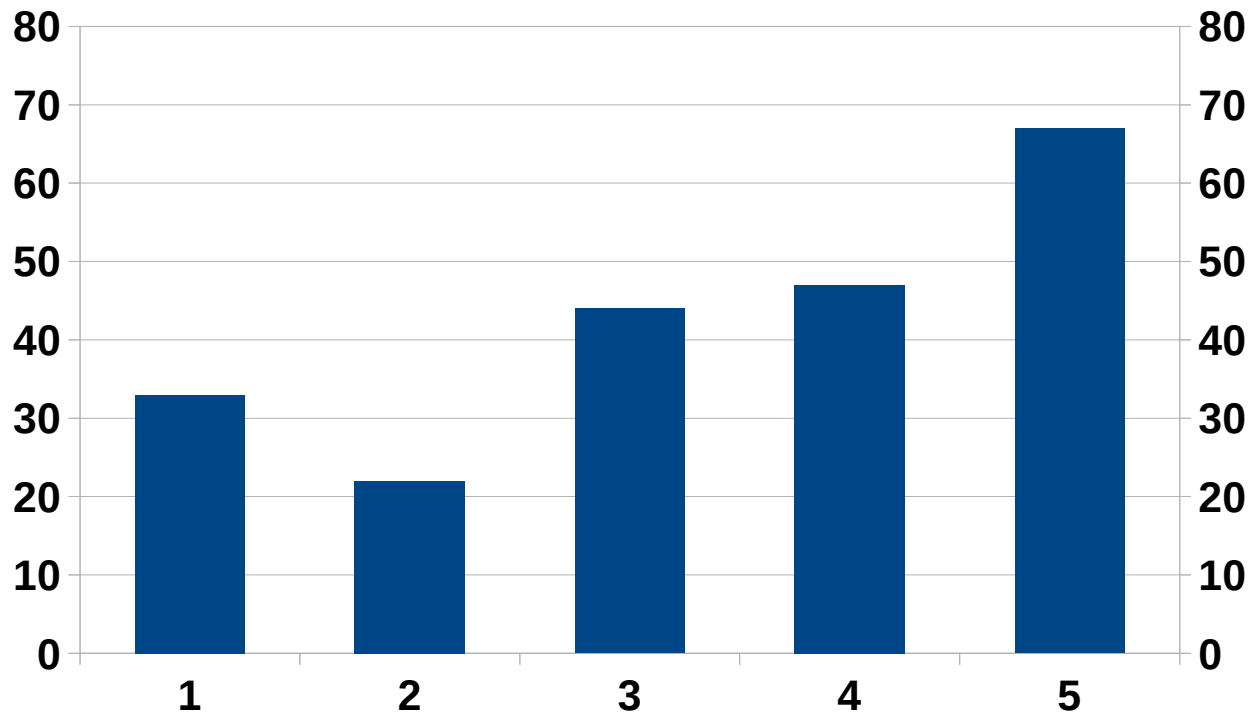
DXpeditionstauglich (geringes Gewicht)



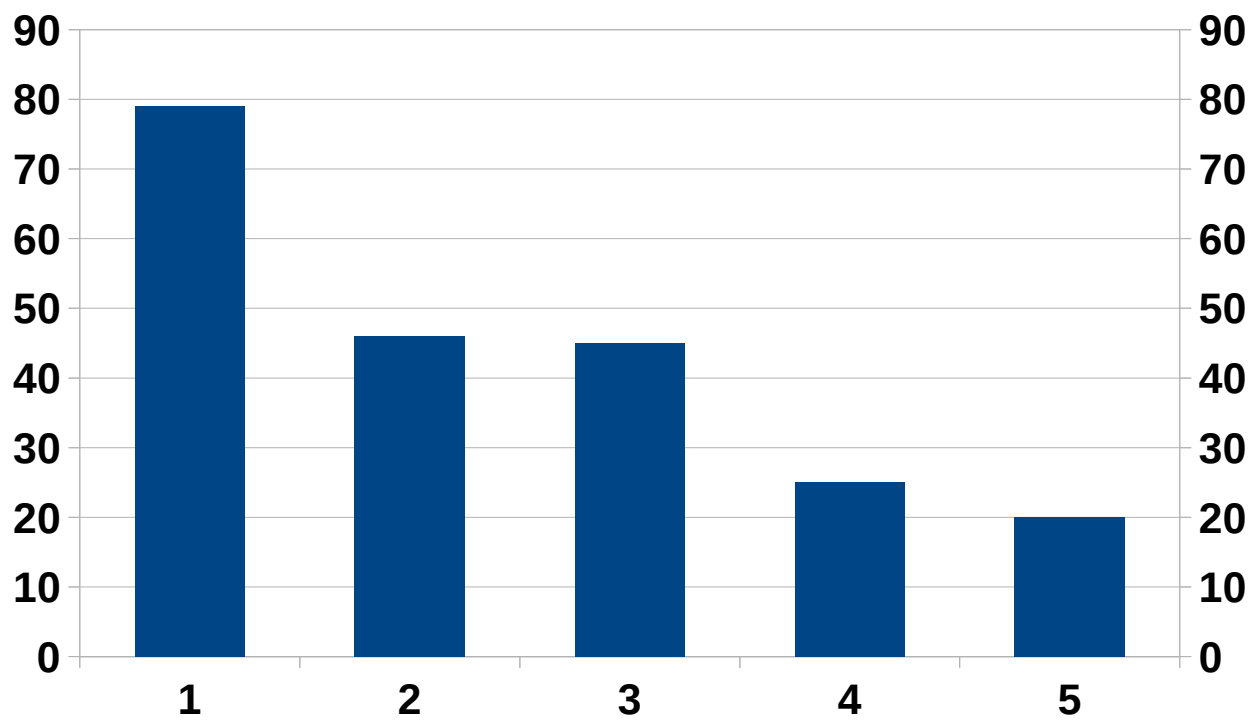
Eindeutige Anzeige bei Split-Betrieb



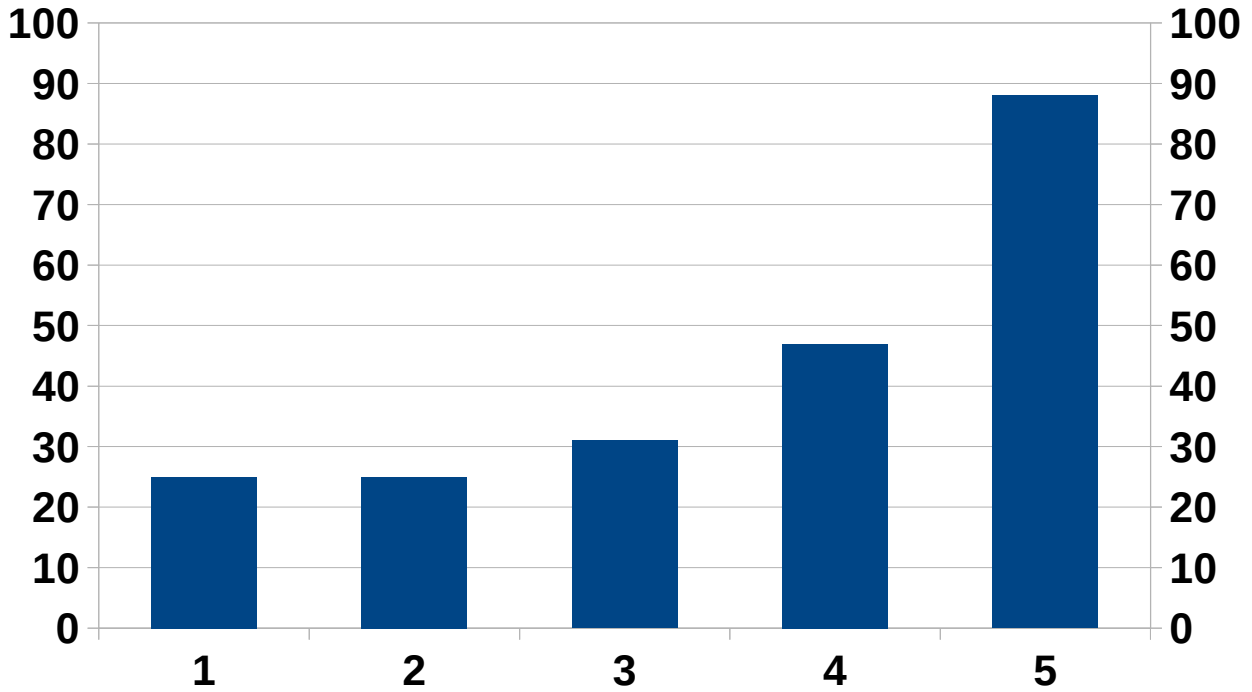
Bandwahltasten



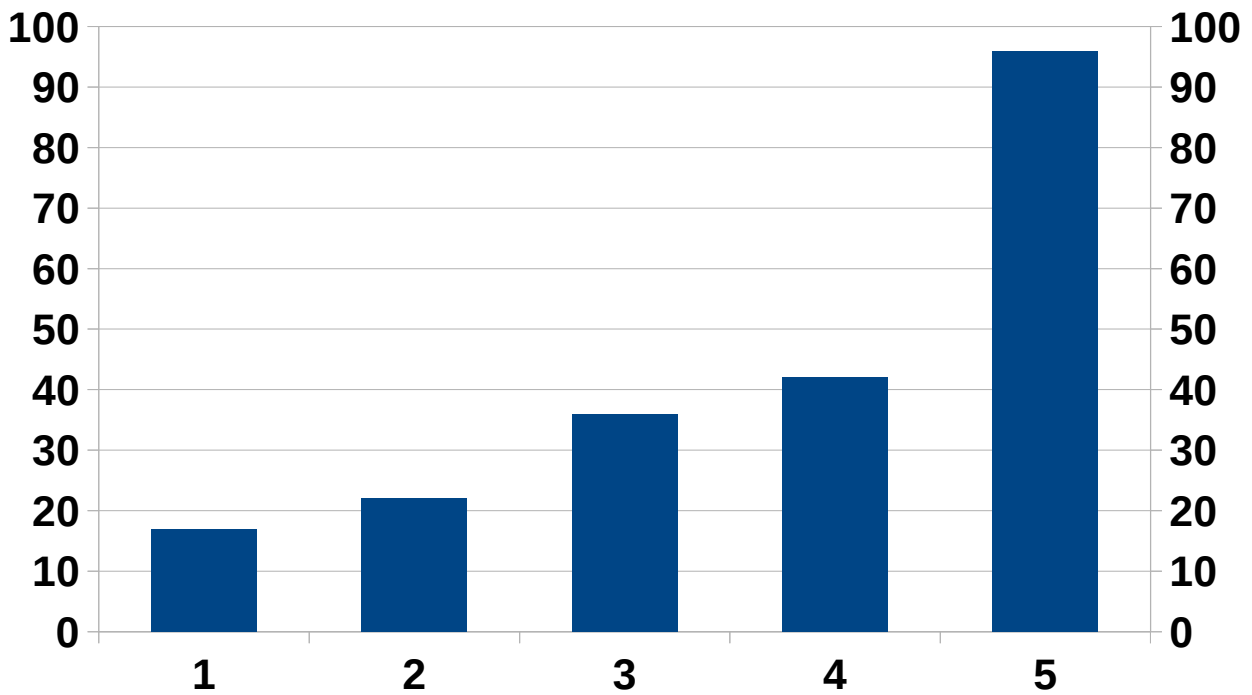
Ziffernblock



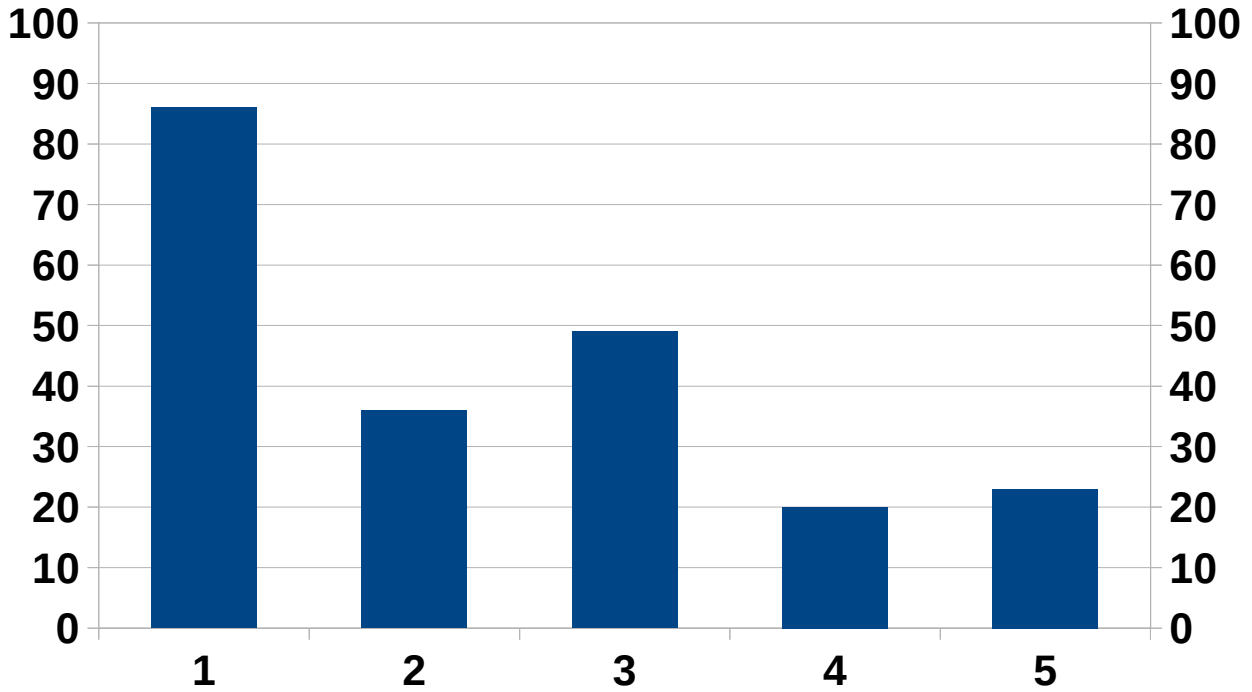
Eigener Abstimmknopf für 2. VFO



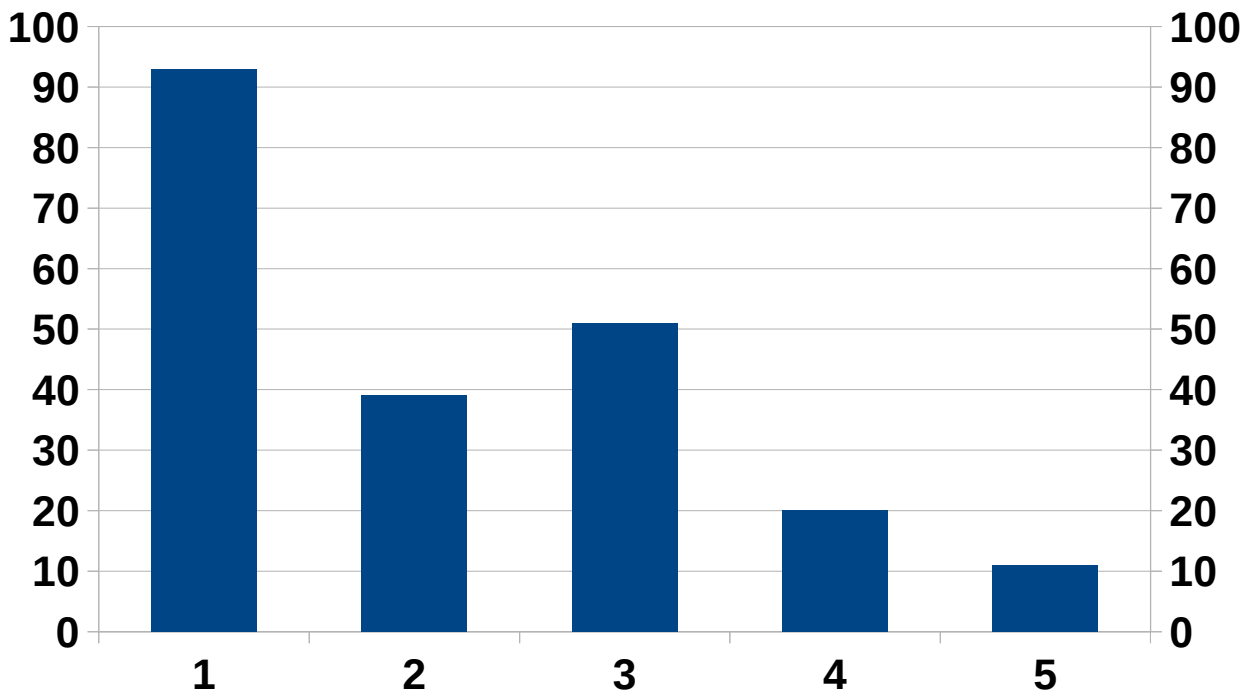
Bandinfo-Ausgang



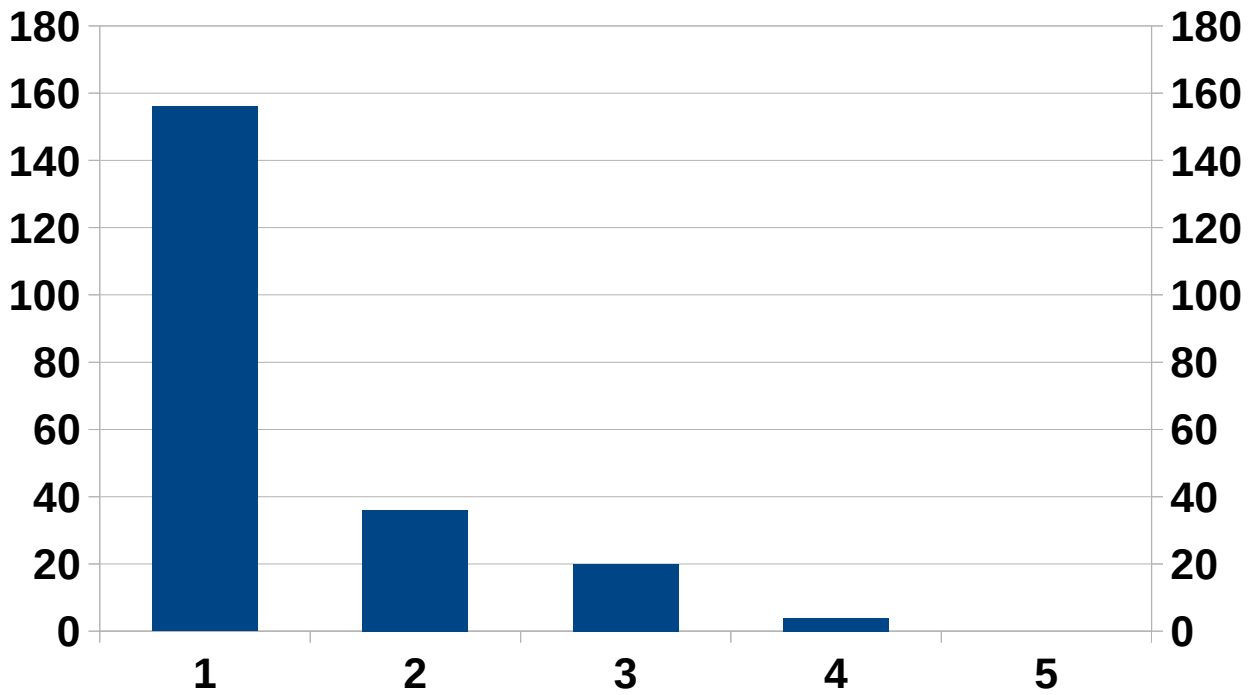
Eingebautes Netzteil



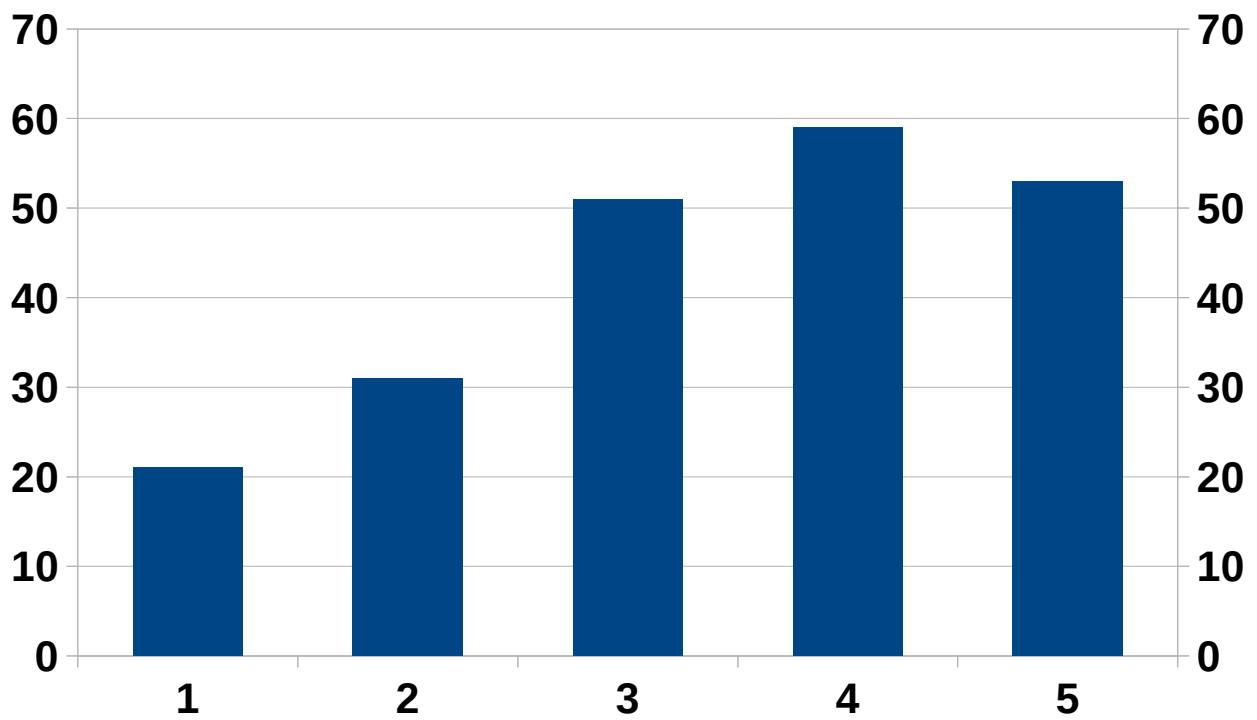
Anschluß für externen Monitor



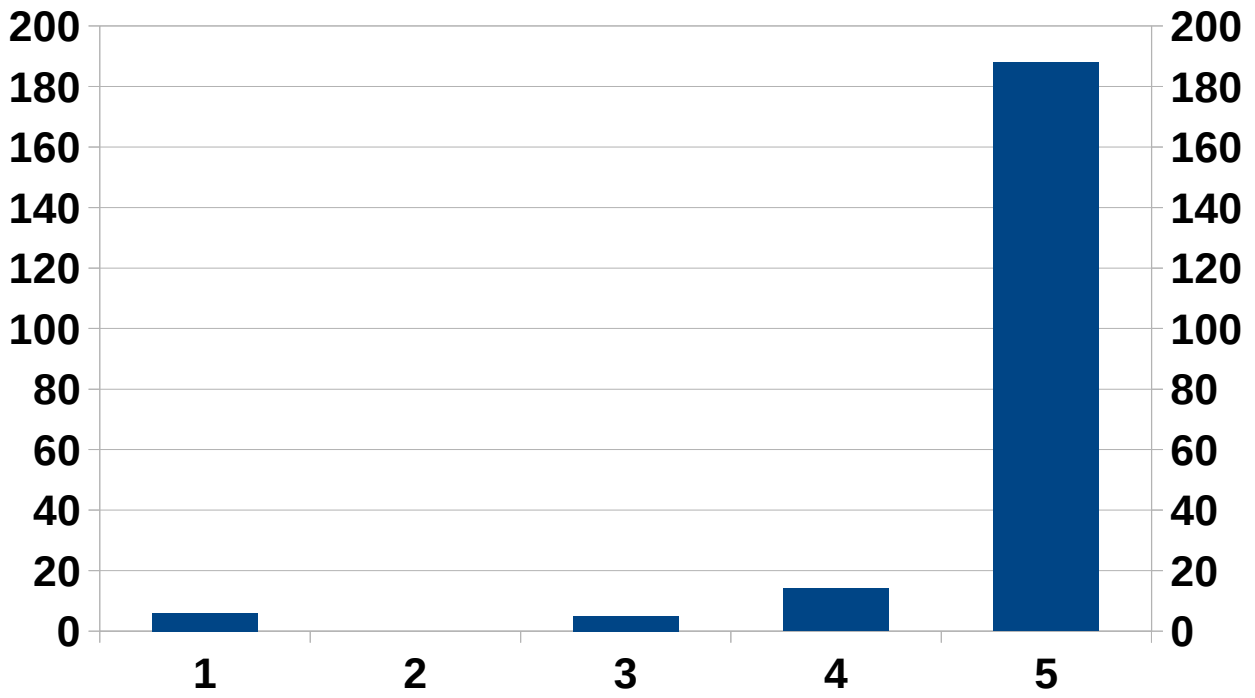
Touch Display



Geräuscharmer Lüfter

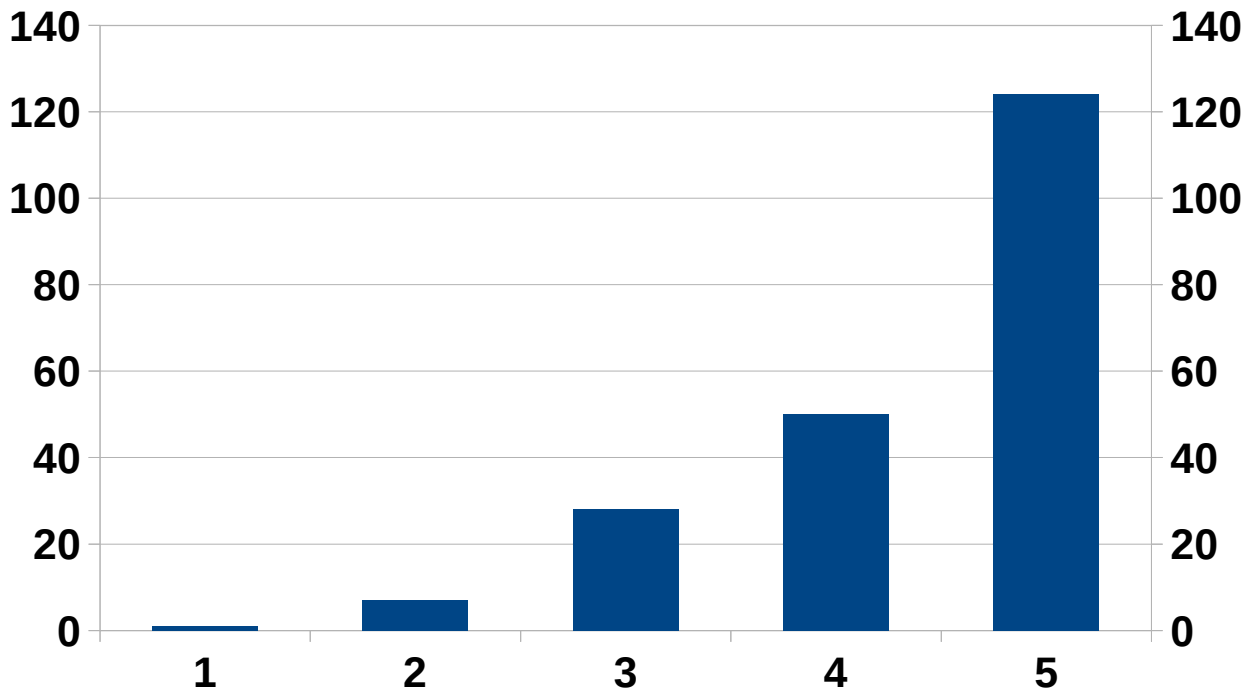


CAT-Schnittstelle

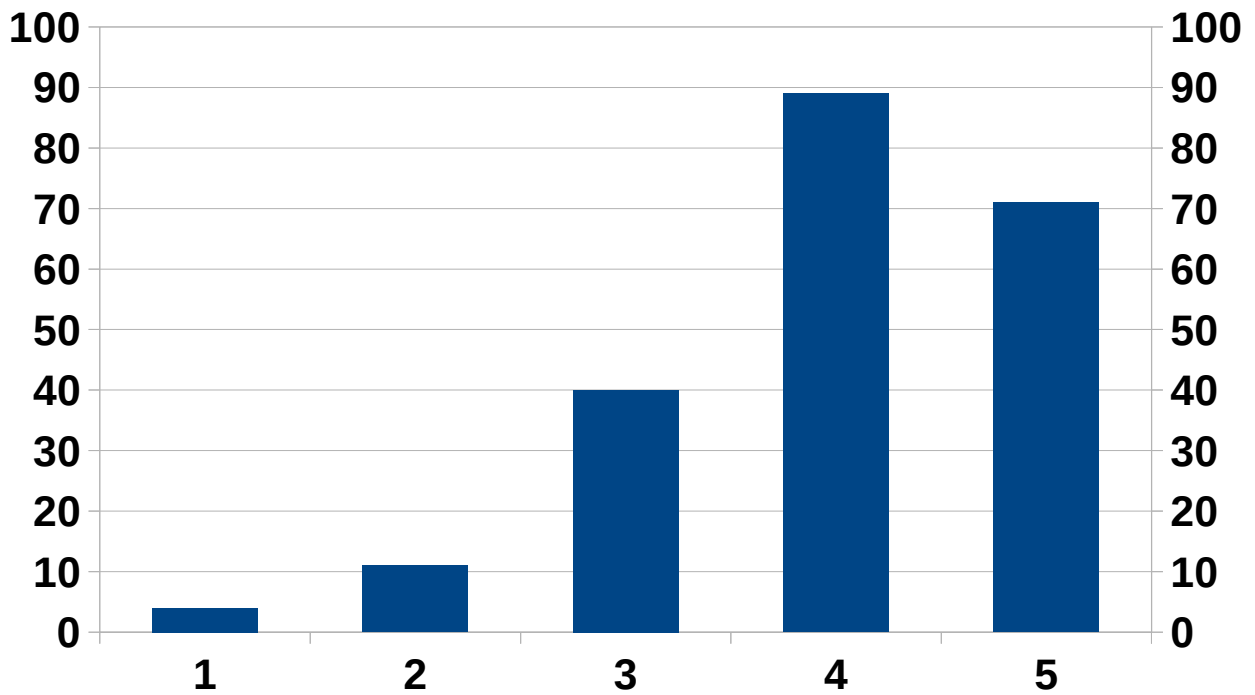


Der Empfänger

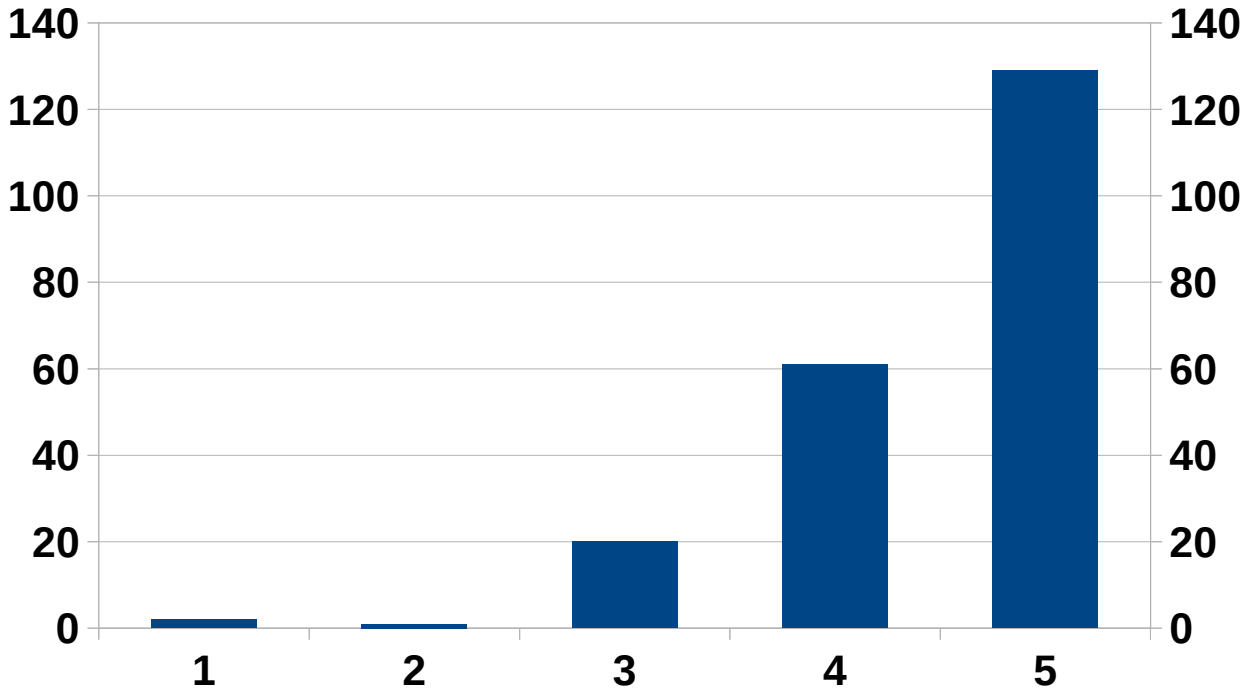
Intermodulationsfreier Dynamikbereich



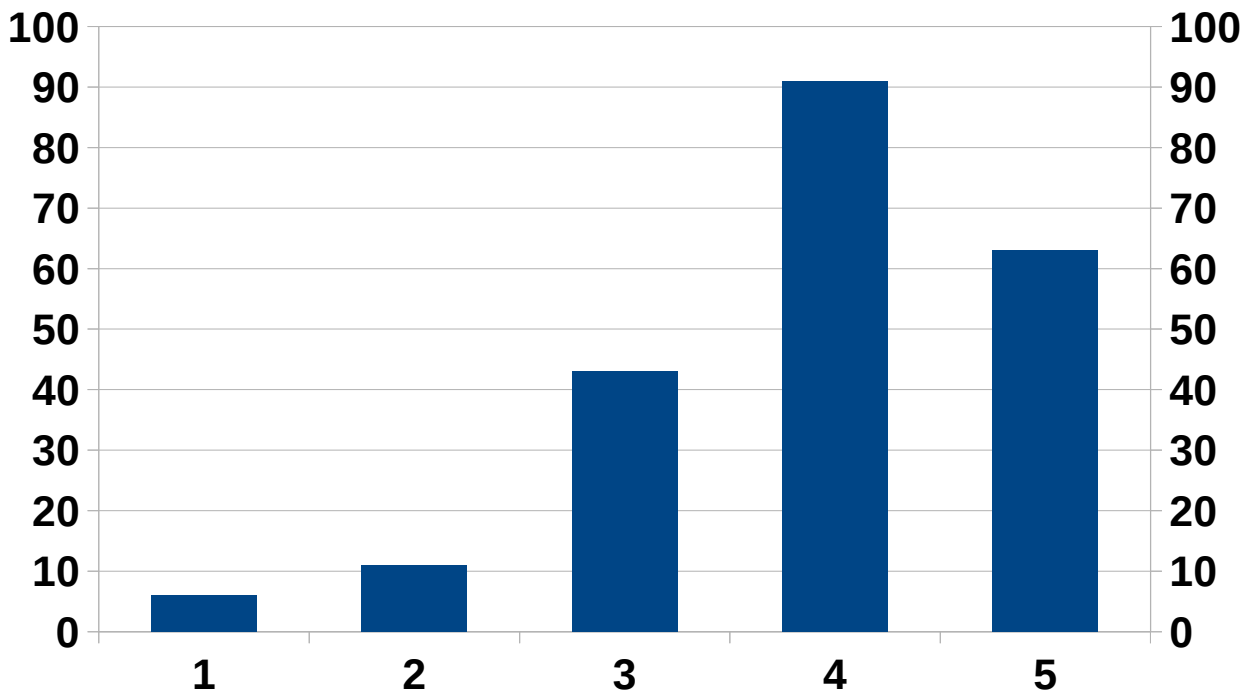
Hohe Empfindlichkeit



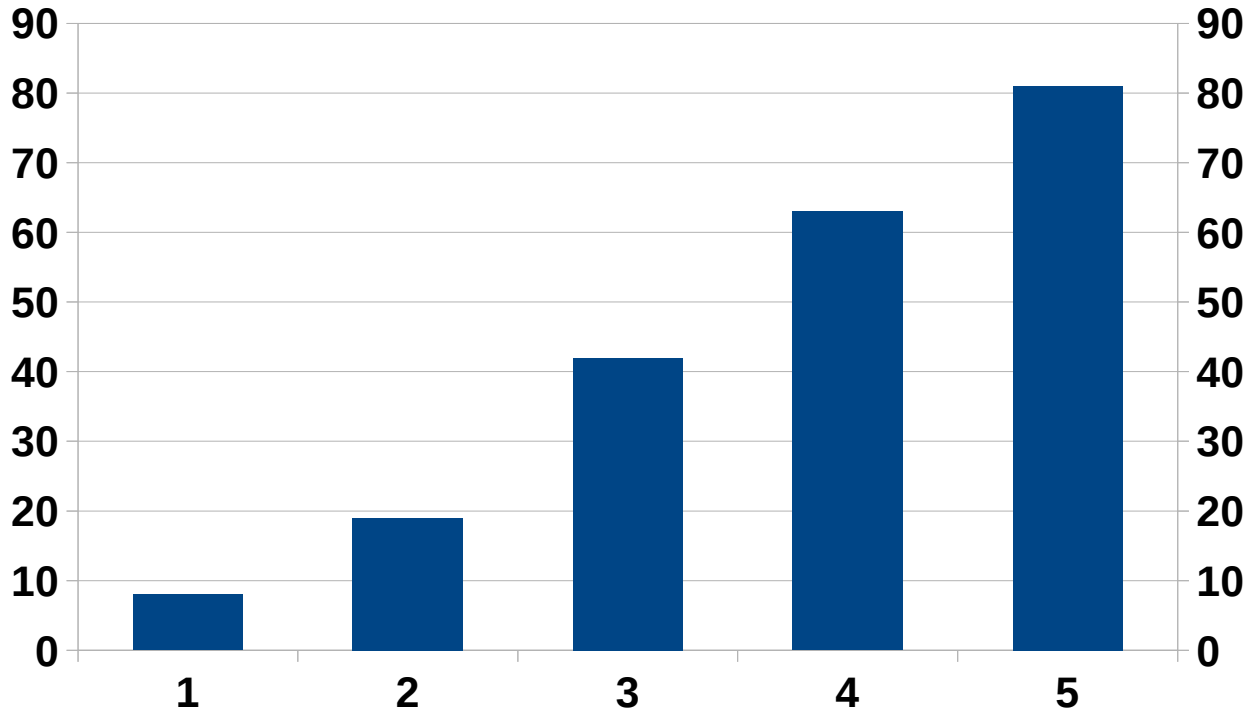
ZF-Bandbreite frei wählbar



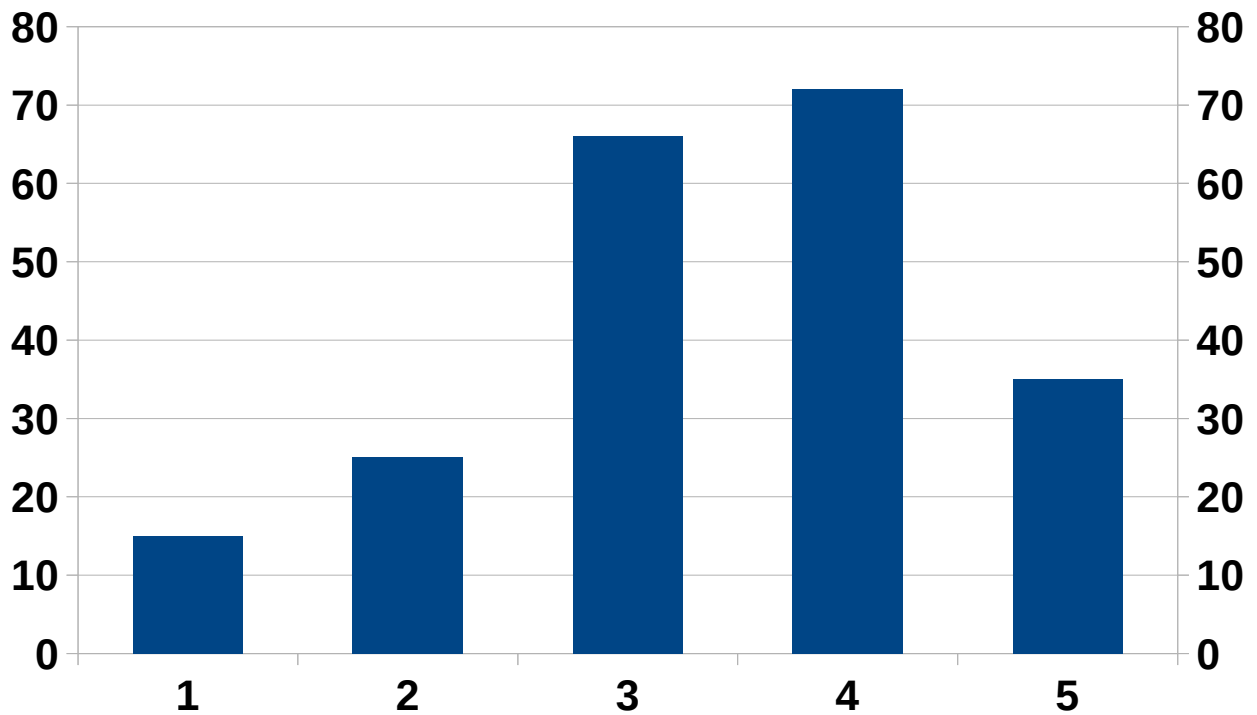
AGC-Konstanten regelbar



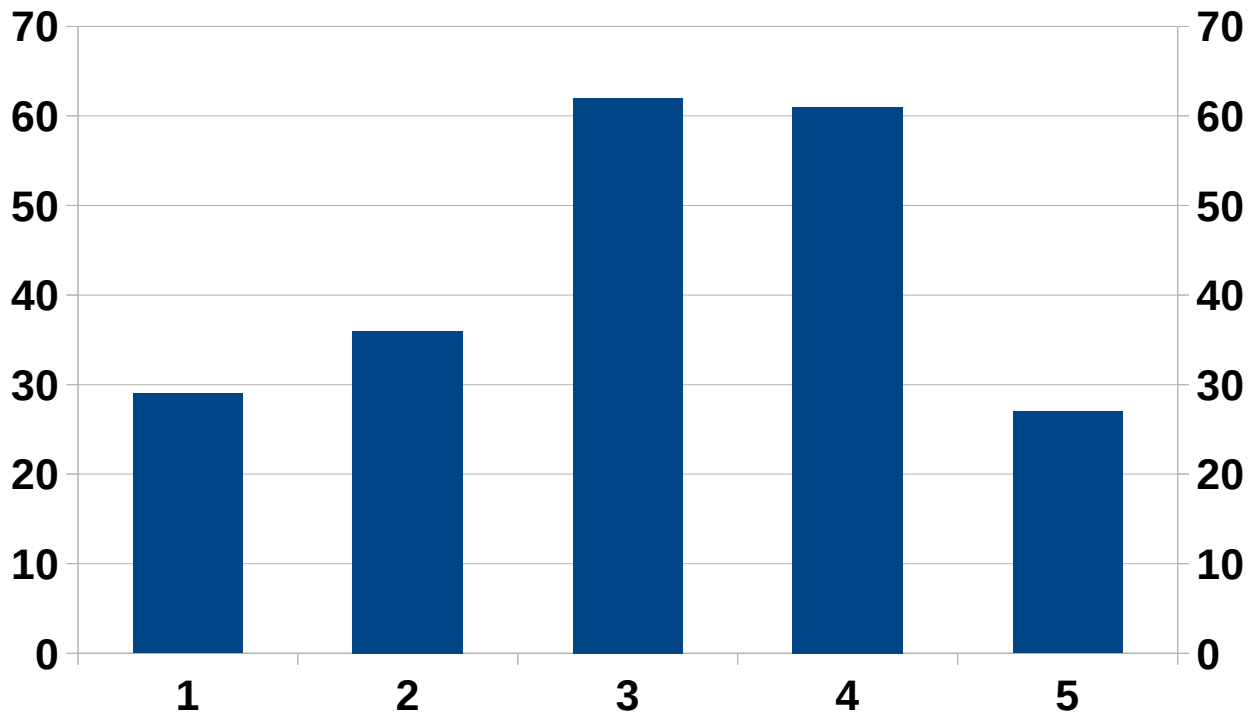
Großsignalfester Noise Blanker



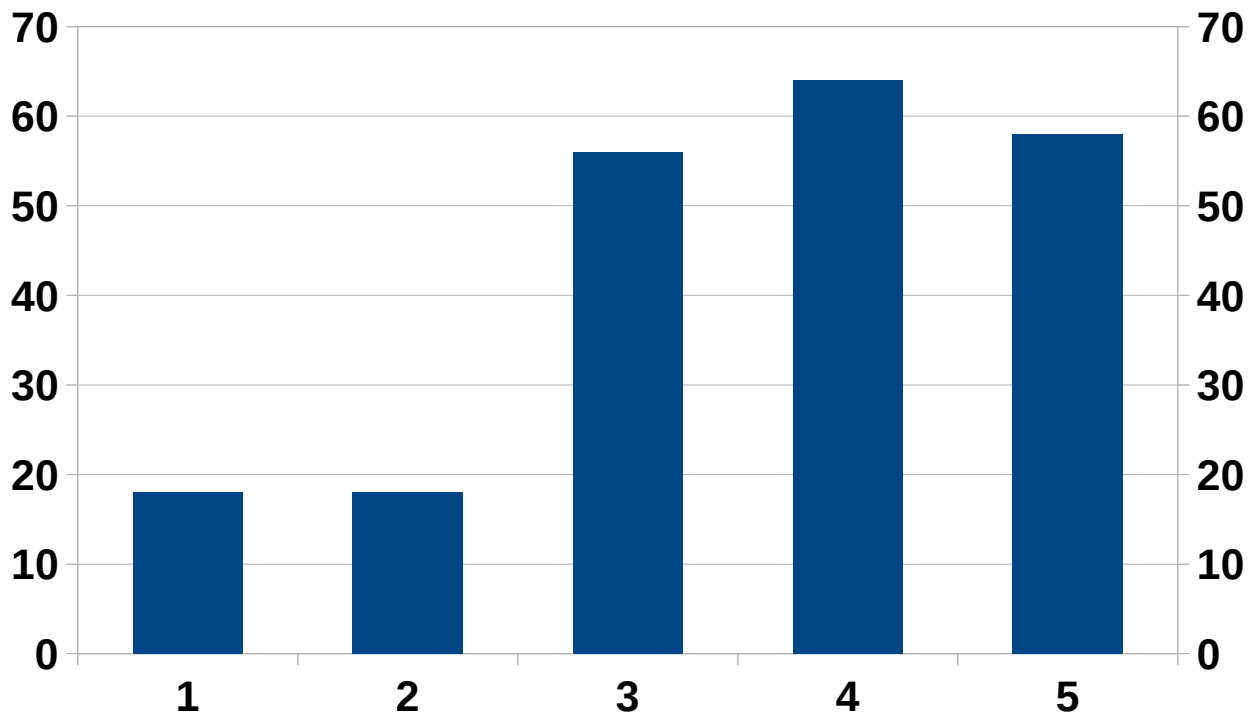
Noise Reduction (DSP)



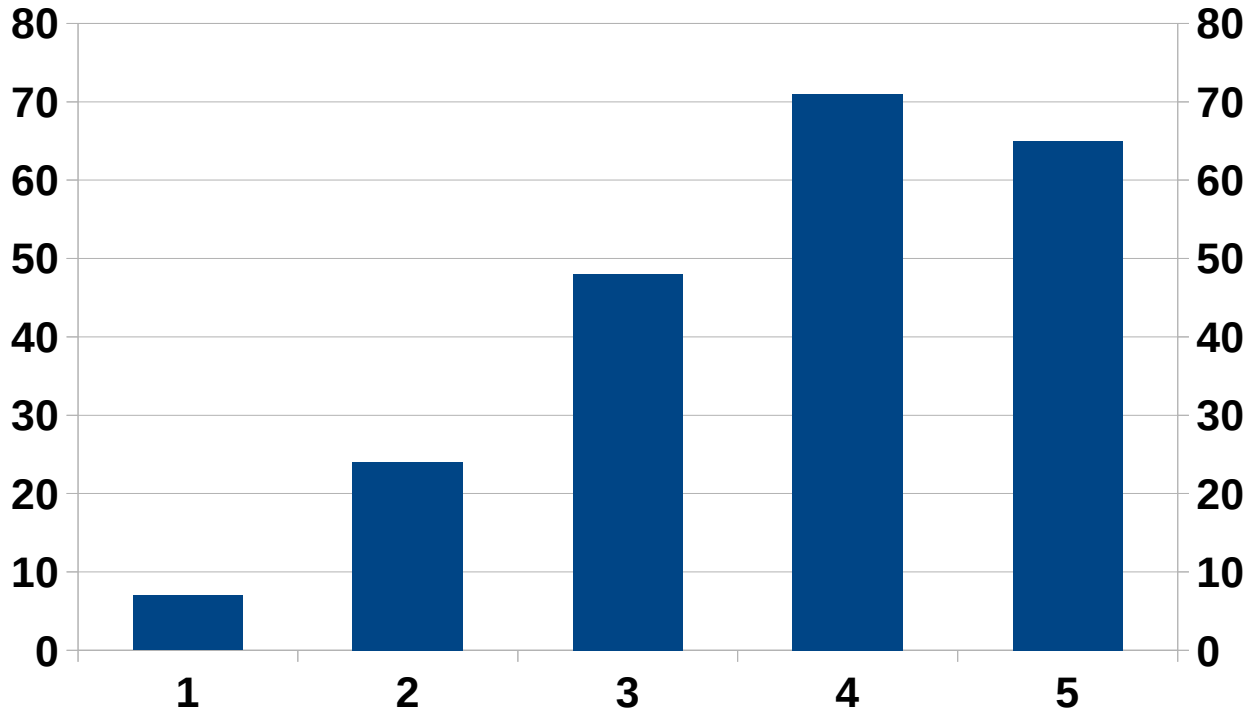
Auto-Notch



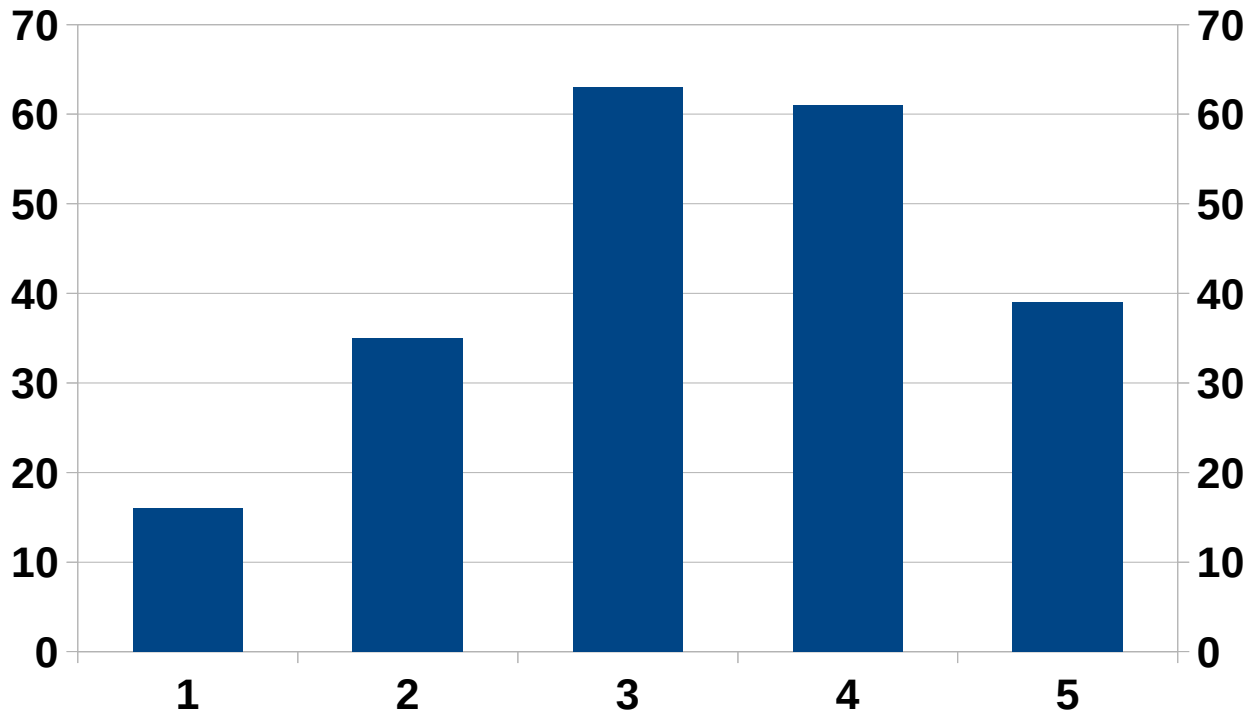
Manuelle RF-Gain



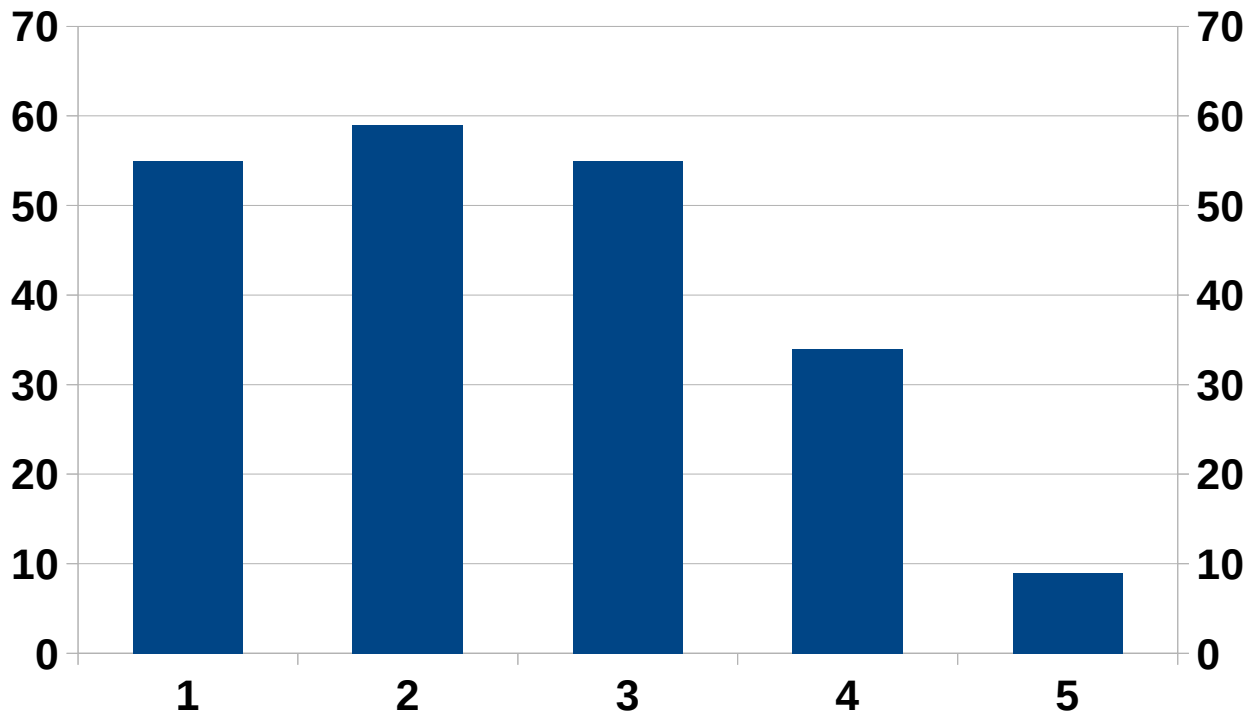
Abschächer in Stufen schaltbar



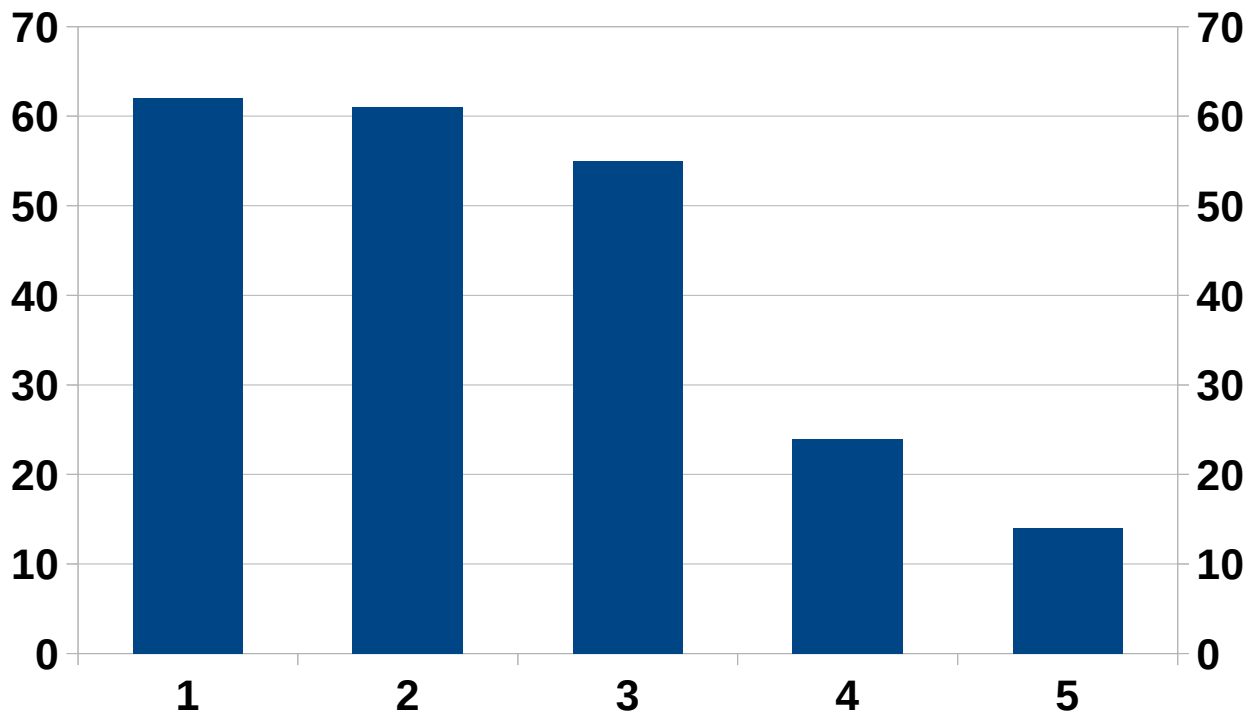
Vorverstärker in Stufen



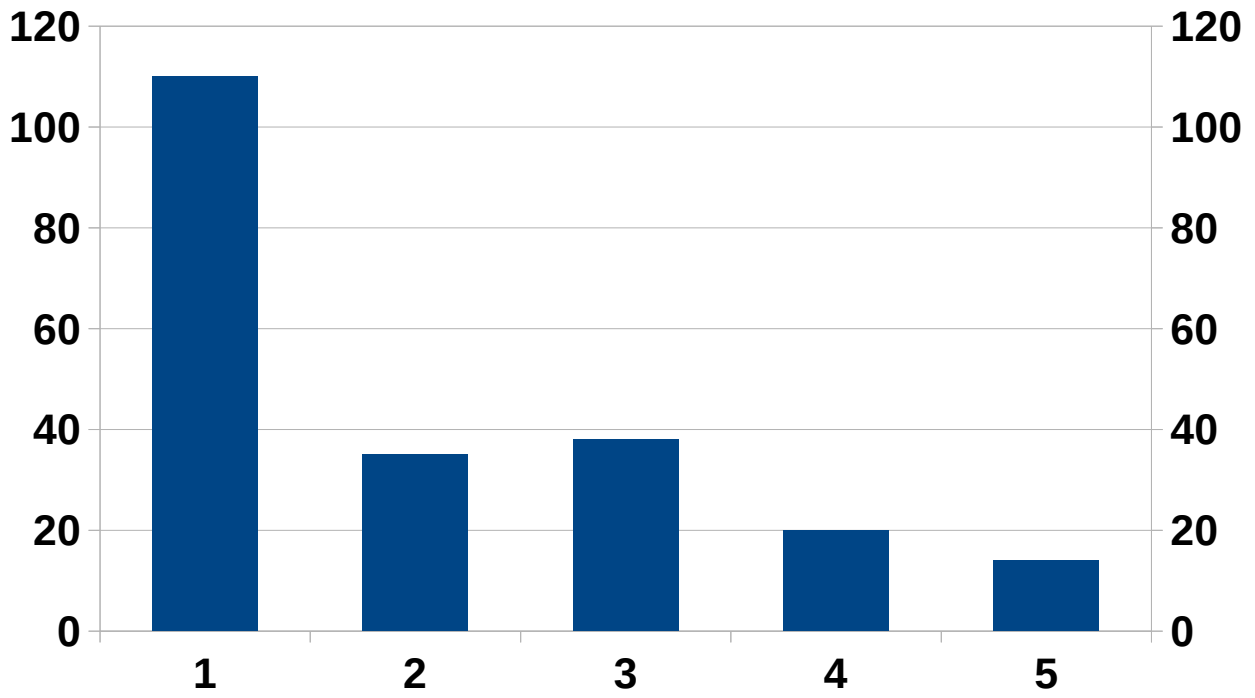
RX-Audio Equalizer



Genauer S-Meter

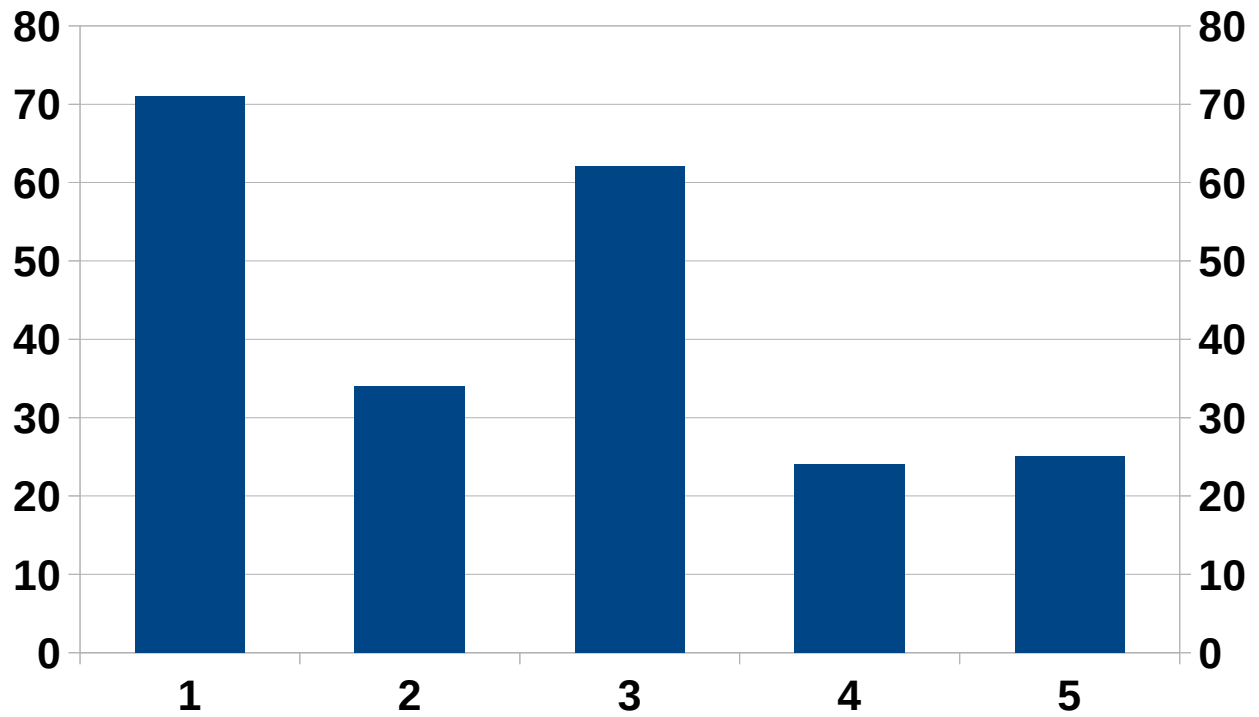


Integrierter CW / RTTY Decoder

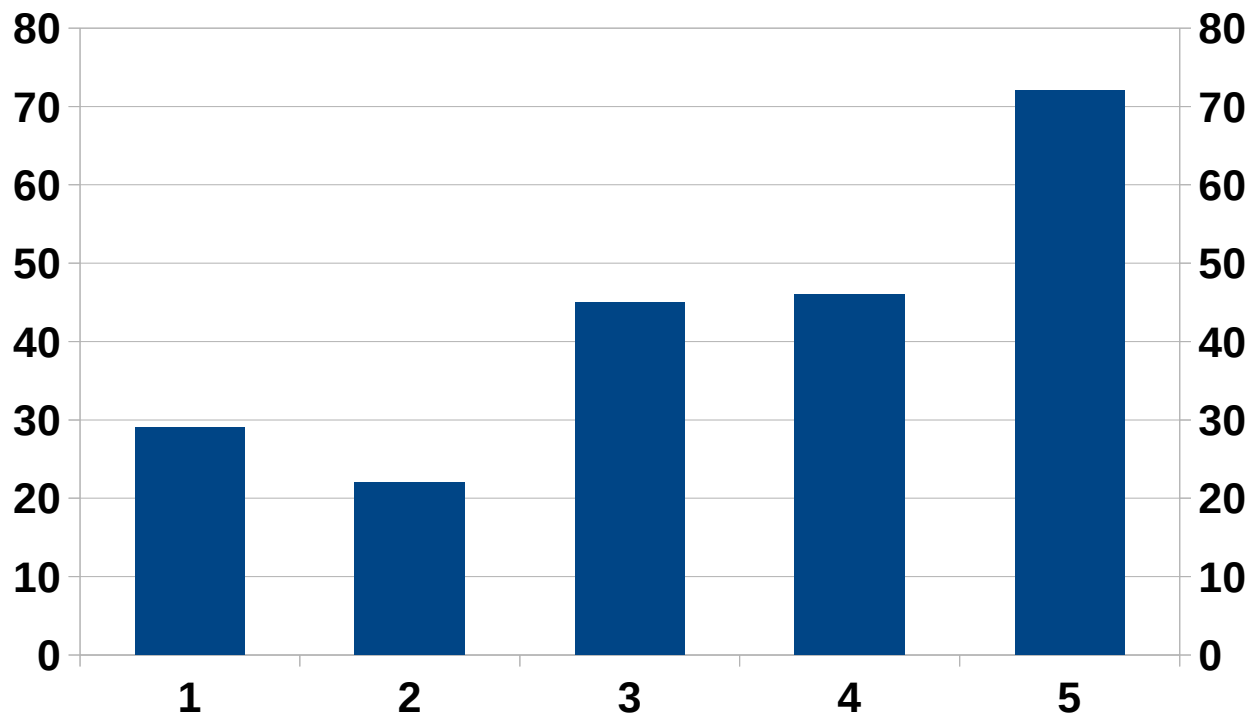


Der Sender

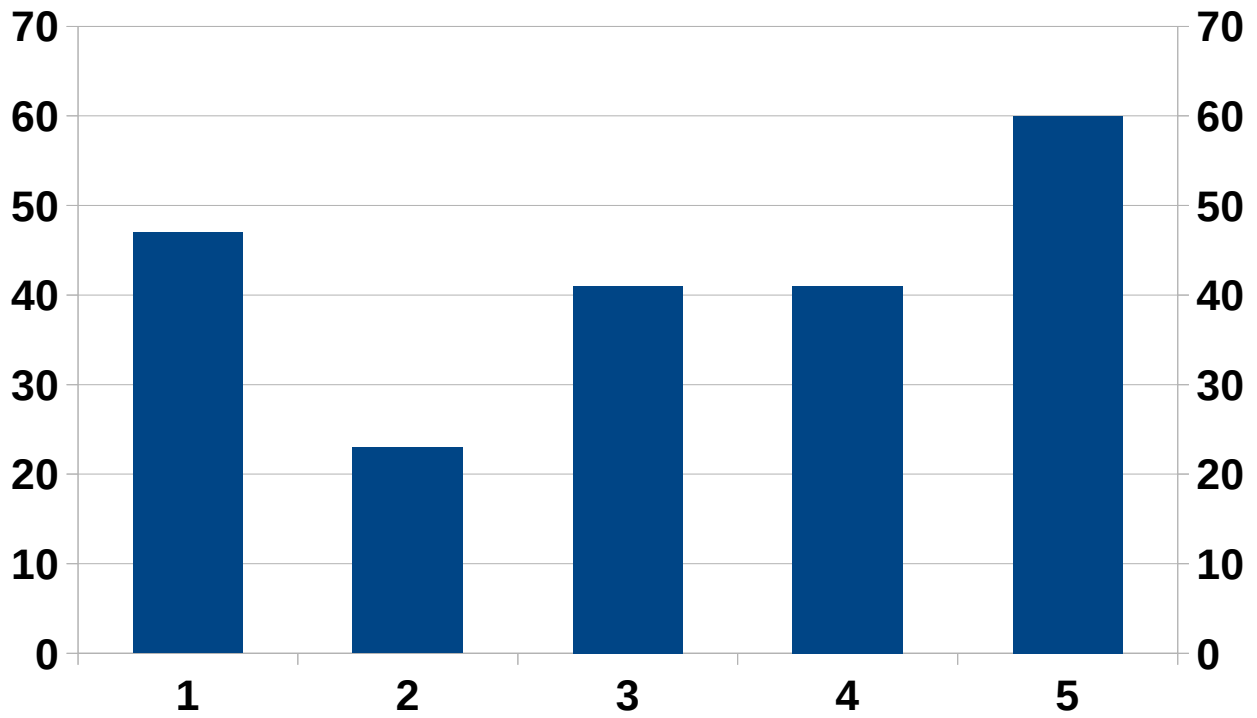
Leistung >100 Watt



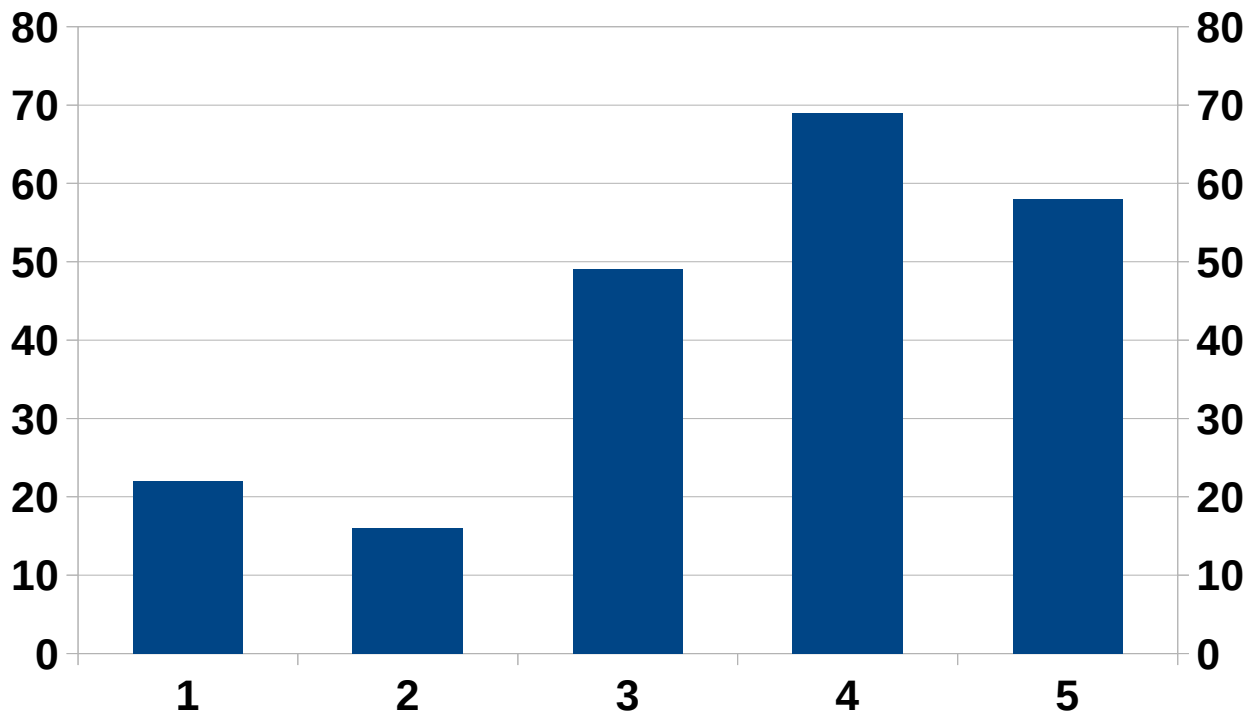
Integrierter Antennentuner



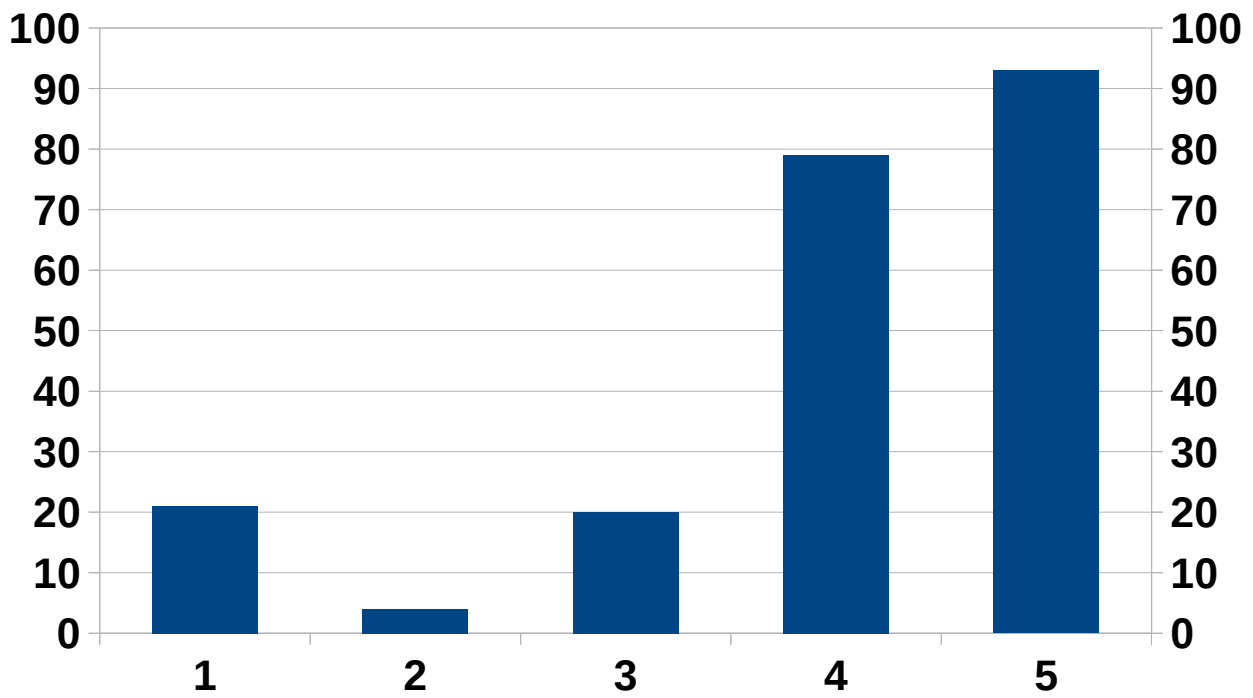
Full-BK in CW



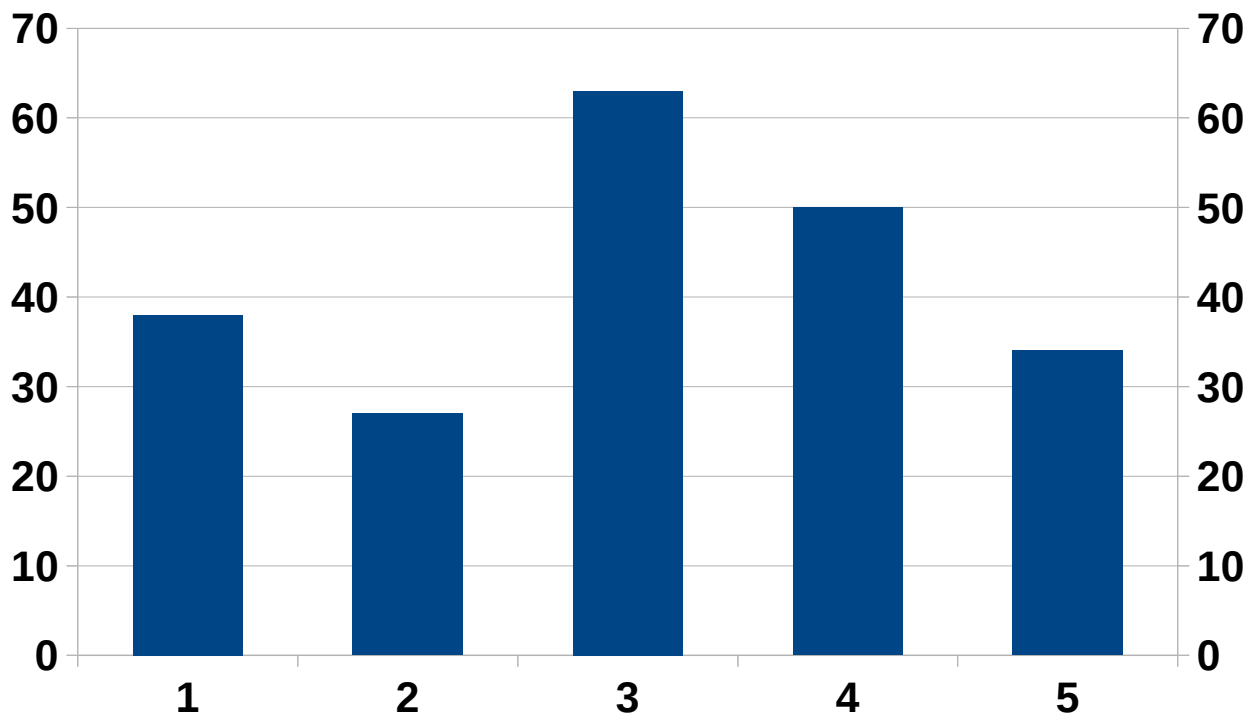
Semi-BK Zeiten einstellbar



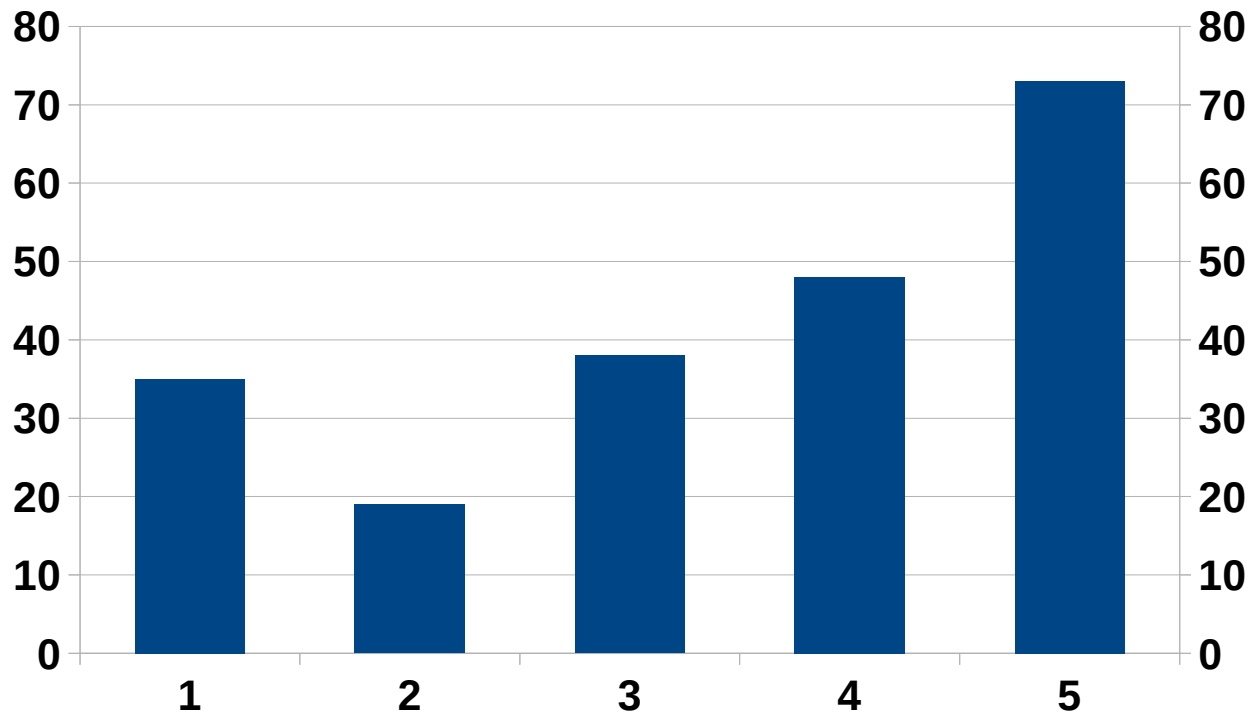
Wirksamer Sprachprozessor



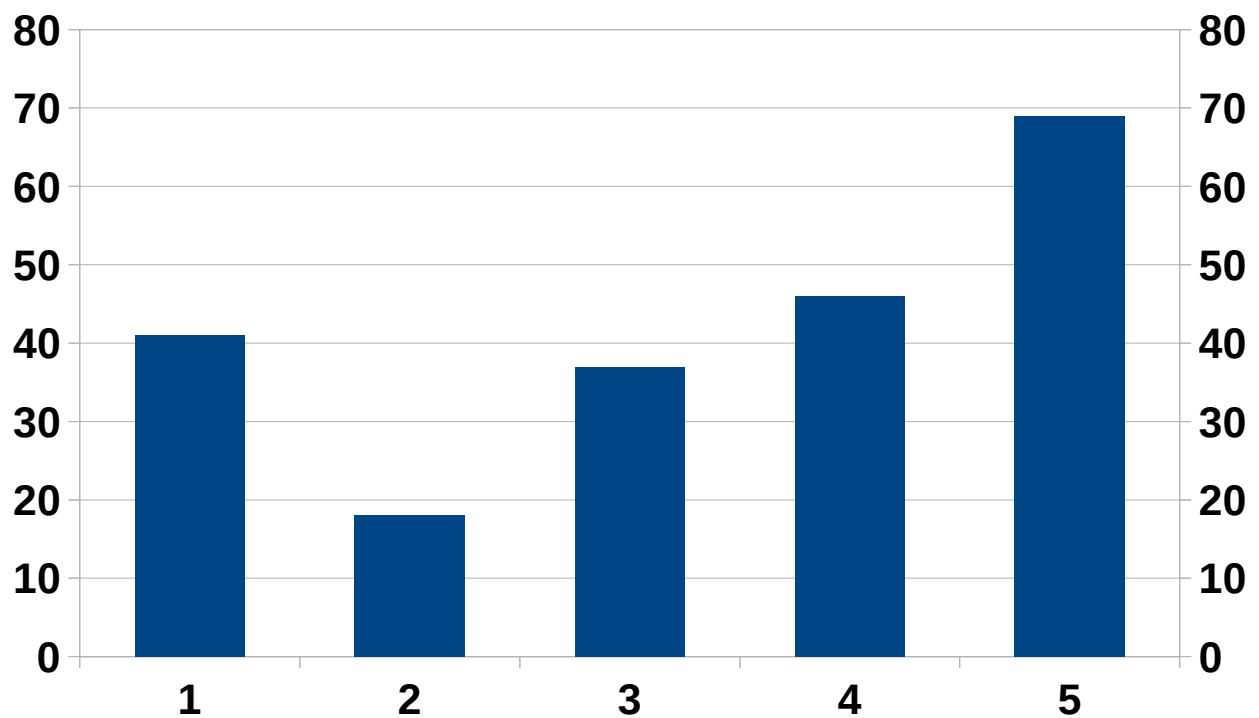
TX-Audio Equalizer



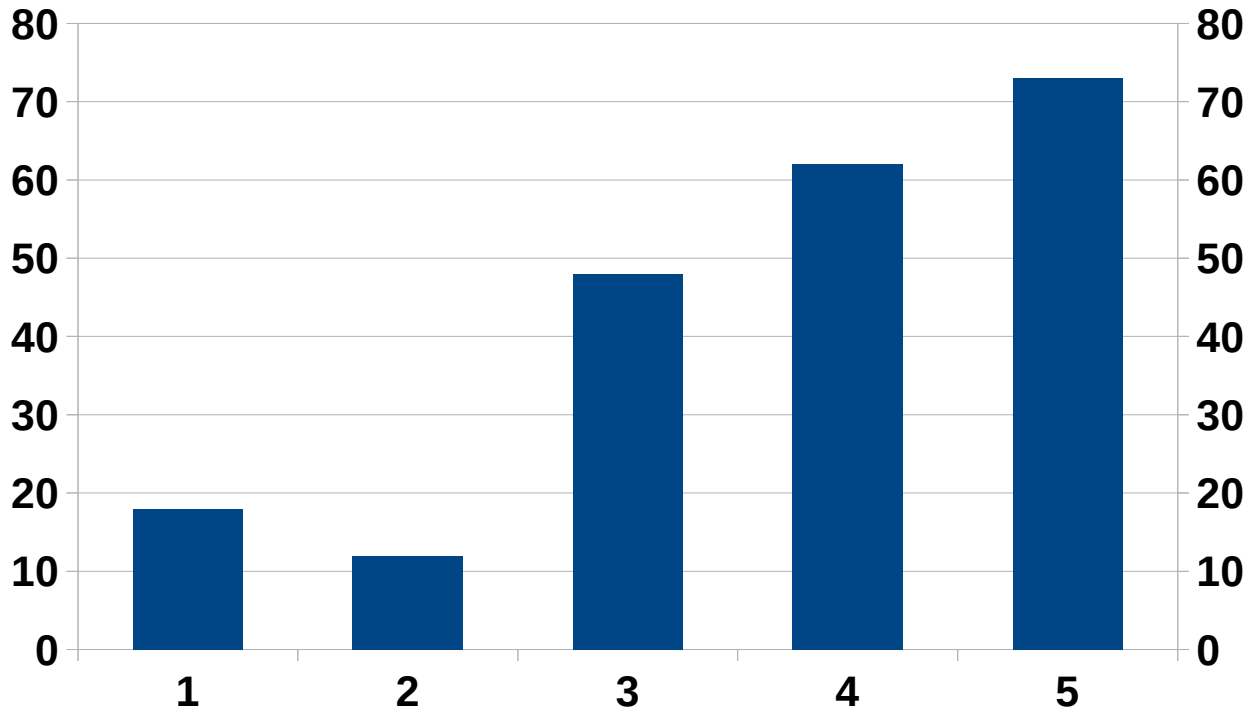
Integrierter Sprachspeicher (DVK)



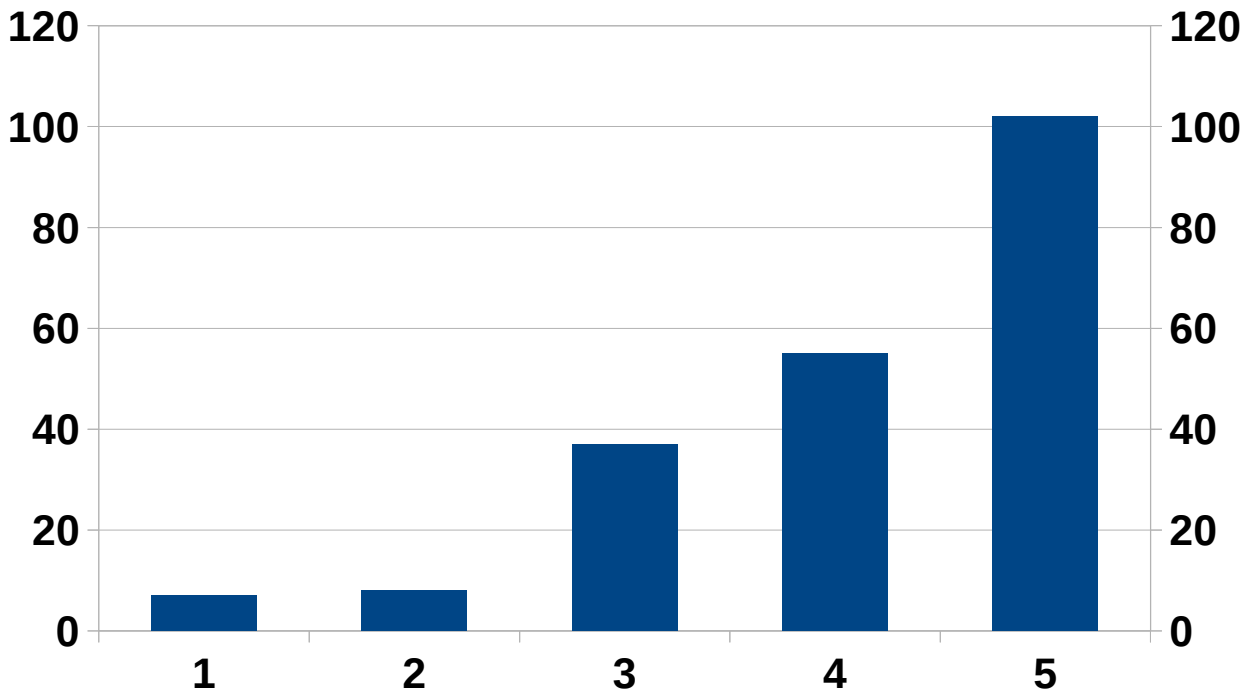
Integrierter Sprachspeicher (DVK) von PC aus steuerbar



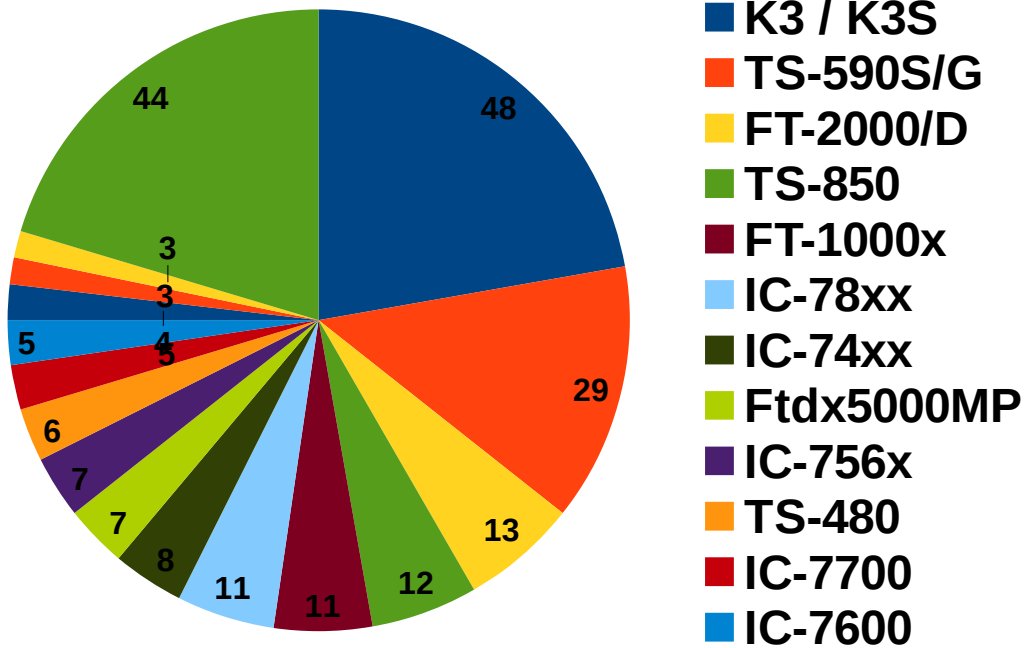
Verzögerung zwischen PTT und HF



Geringes Phasenrauschen



Eingesetzte TRX



Eingesetzte Zweit-TRX (bei SO2R)

